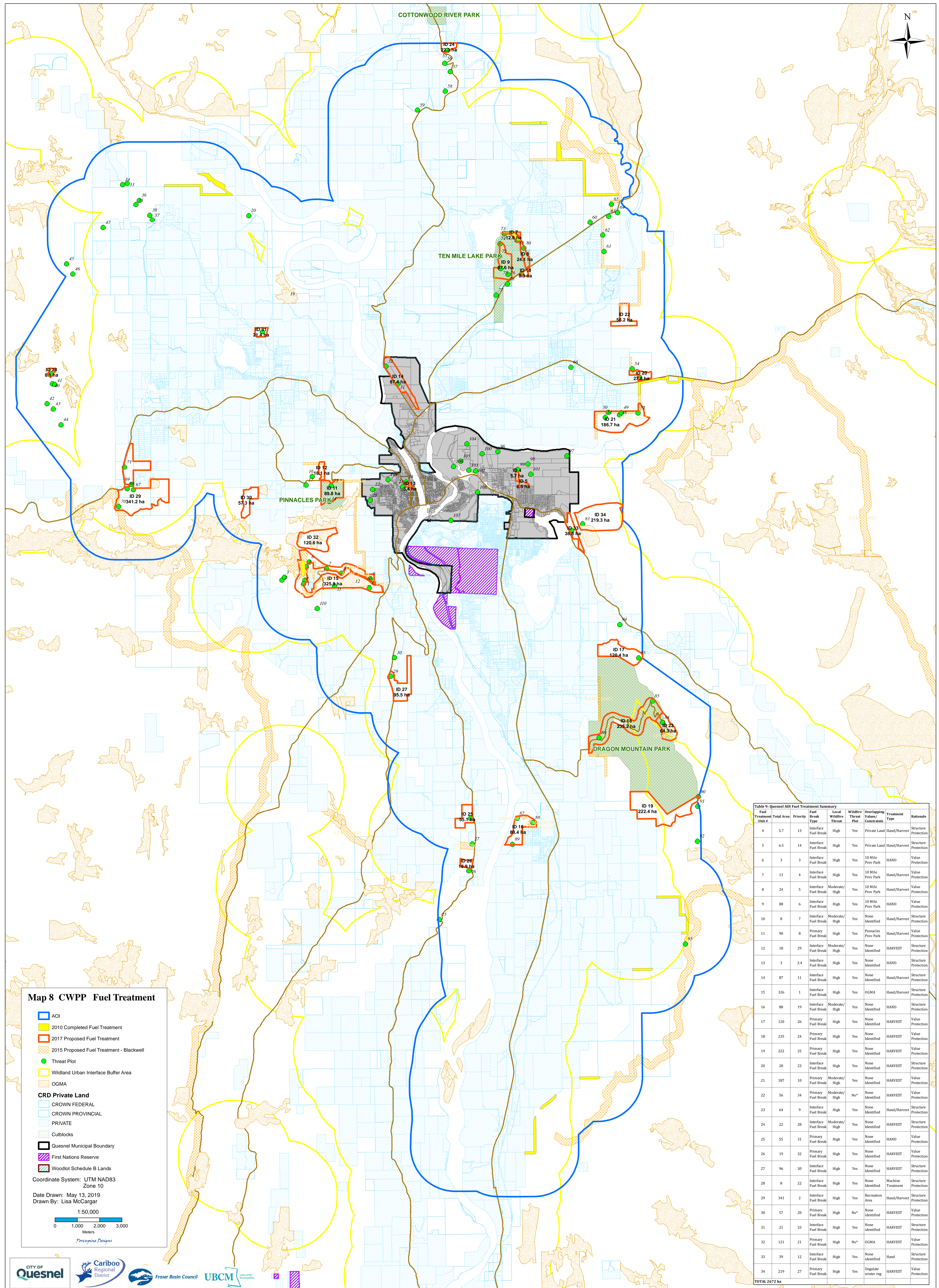


Quesnel and Area Community Wildfire Protection Plan (CWPP)



Map 8 CWPP Fuel Treatment

- AOI
- 2010 Completed Fuel Treatment
- 2017 Proposed Fuel Treatment
- 2015 Proposed Fuel Treatment - Blackwell
- Threat Plot
- Wildland Urban Interface Buffer Area
- OGMA

CRD Private Land

- CROWN FEDERAL
- CROWN PROVINCIAL
- PRIVATE
- Cutblocks
- Quesnel Municipal Boundary
- First Nations Reserve
- Woodlot Schedule B Lands

Coordinate System: UTM NAD83 Zone 10

Date Drawn: May 13, 2019
Drawn By: Lisa McCargar

1:50,000

0 1,000 2,000 3,000 Meters

Percepine Designs

Table 9: Quesnel AOI Fuel Treatment Summary

Fuel Treatment Unit #	Total Area	Priorities	Fuel Break Type	Local Wildfire Threat	Wildfire Threat Value/Constraints	Overlapping Values/Constraints	Treatment Type	Rationale
4	5.7	13	Interface Fuel Break	High	Yes	Private Land	Hand/Harvest	Structure Protection
5	6.5	14	Interface Fuel Break	High	Yes	Private Land	Hand/Harvest	Structure Protection
6	3	3	Interface Fuel Break	High	Yes	10 Mile Prov Park	HAND	Value Protection
7	13	4	Interface Fuel Break	High	Yes	10 Mile Prov Park	Hand/Harvest	Value Protection
8	24	5	Interface Fuel Break	Moderate/High	Yes	10 Mile Prov Park	Hand/Harvest	Value Protection
9	88	6	Interface Fuel Break	High	Yes	10 Mile Prov Park	HAND	Value Protection
10	8	7	Interface Fuel Break	Moderate/High	Yes	None Identified	Hand/Harvest	Structure Protection
11	90	8	Primary Fuel Break	High	Yes	Pinnacles Prov Park	Hand/Harvest	Value Protection
12	18	29	Interface Fuel Break	Moderate/High	Yes	None Identified	HARVEST	Structure Protection
13	3	3.4	Interface Fuel Break	High	Yes	None Identified	HAND	Structure Protection
14	87	11	Interface Fuel Break	High	Yes	None Identified	Hand/Harvest	Structure Protection
15	326	1	Interface Fuel Break	High	Yes	OGMA	Hand/Harvest	Structure Protection
16	88	19	Interface Fuel Break	Moderate/High	Yes	None Identified	HAND	Structure Protection
17	120	26	Primary Fuel Break	High	Yes	None Identified	HARVEST	Value Protection
18	235	24	Primary Fuel Break	High	Yes	None Identified	HARVEST	Value Protection
19	222	25	Primary Fuel Break	High	Yes	None Identified	HARVEST	Value Protection
20	28	23	Interface Fuel Break	High	Yes	None Identified	HARVEST	Structure Protection
21	187	10	Primary Fuel Break	Moderate/High	Yes	None Identified	HARVEST	Value Protection
22	56	34	Interface Fuel Break	Moderate/High	No*	None Identified	HARVEST	Value Protection
23	64	9	Interface Fuel Break	High	Yes	None Identified	Hand/Harvest	Structure Protection
24	22	28	Interface Fuel Break	Moderate/High	Yes	None Identified	HARVEST	Structure Protection
25	55	31	Primary Fuel Break	High	Yes	None Identified	HAND	Value Protection
26	19	32	Interface Fuel Break	High	Yes	None Identified	HARVEST	Value Protection
27	96	30	Interface Fuel Break	High	Yes	None Identified	Machine Treatment	Structure Protection
28	8	22	Interface Fuel Break	High	Yes	Recreation Area	Hand/Harvest	Structure Protection
29	341	2	Interface Fuel Break	High	Yes	None Identified	HARVEST	Value Protection
30	57	20	Primary Fuel Break	High	No*	None Identified	HARVEST	Value Protection
31	21	33	Interface Fuel Break	High	Yes	None Identified	HARVEST	Structure Protection
32	121	21	Primary Fuel Break	High	No*	OGMA	HARVEST	Value Protection
33	39	12	Interface Fuel Break	High	Yes	None Identified	Hand	Structure Protection
34	219	27	Primary Fuel Break	High	Yes	Ugulate wintering	HARVEST	Value Protection

TOTAL 2672 ha