



PRINCE GEORGE AND AREA COMMUNITY WILDFIRE ROUNDTABLE

October 29, 2024

10:00am – 2:30pm

PG Civic Centre



HADIH

Bundada
Hoonzoo

*Gratefully gathered on the
unceded, ancestral lands
of the Lheidli T'enneh*



**BEFORE
WE
BEGIN**

- Facilities
- Muster Station
- Refreshments
- Safety
- Parking
- Wifi

- **Etiquette:**
 - Focus on wildfire preparedness and prevention
 - Respectful conversation
 - Recognize there are multiple perspectives

OUTLINE FOR THE DAY

- ❖ Introductions & brief organizational updates

• *Quick Break*

- ❖ Review wildfire scenario
- ❖ BC Wildfire Service
- ❖ Emergency Management and Climate Readiness
- ❖ Communities
 - Lheidli T'enneh
 - RDFFG
 - City of PG
- Lunch
 - ❖ Other's Roles
 - ❖ Questions and Discussion
 - ❖ Recap – any actions or follow up



ORGANIZATIONAL UPDATES

- **Please keep it brief**
- **Name and Organization**
- **What wildfire preparedness and planning activities have you and your team been up to?**
- **Any other pertinent information you would like to share? i.e. Funding sources, resources, collaborations.**

Quick Break



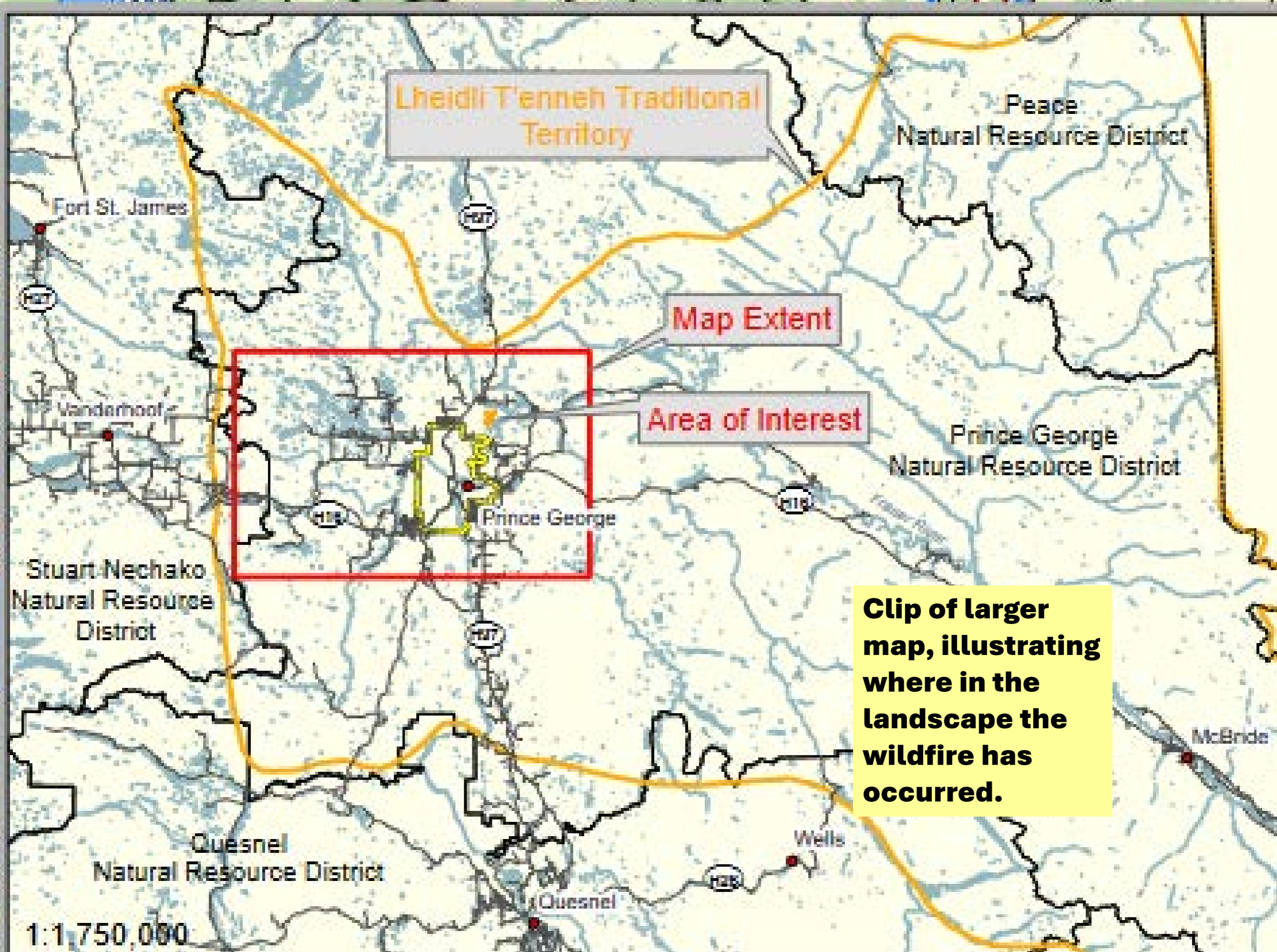
FIRE DRILL

Wildfire Scenario



WILDFIRE SCENARIO DESCRIPTION

- An unexpected and rare April (spring) thunderstorm lit up the skies over Prince George.
- The storm began northeast of Prince George near Table River, making its way south and west over PG.
- The storm came on the heels of a drought year followed by little to no snow accumulation over the winter.
- The storm was the result of a warm moist wind clashing with a cold, dry arctic air mass.
- Three lightning strikes have started fires, and two of these fires are merging.
- The wind is moving from the northeast to the southwest at approximately 30 km/h with gusts up to 60 km/h expected.
- The fires are spreading through mixed forests, and it is pre-green up.
- Drought and unseasonably warm and dry conditions have contributed to lower fuel moisture and increased fire behaviour potential to what would be considered typical at this time of year. Current and forecasted weather favours fire spread to the southwest at rates and intensity that will challenge containment efforts.
- The location on the attached map is 54° 3' 50.2704" N 122° 38' 19.9464" W; of note:
 - Fires are currently on the west side of the Fraser River
 - The fires are overlapping with the Lheidli T'enneh Nation's northern community
 - They started southeast of W1199 and southwest of W1554
 - BCR tracks, pipeline corridor and transmission lines are close



Lheidli T'enneh Traditional Territory

Peace Natural Resource District

Map Extent

Area of Interest

Prince George Natural Resource District

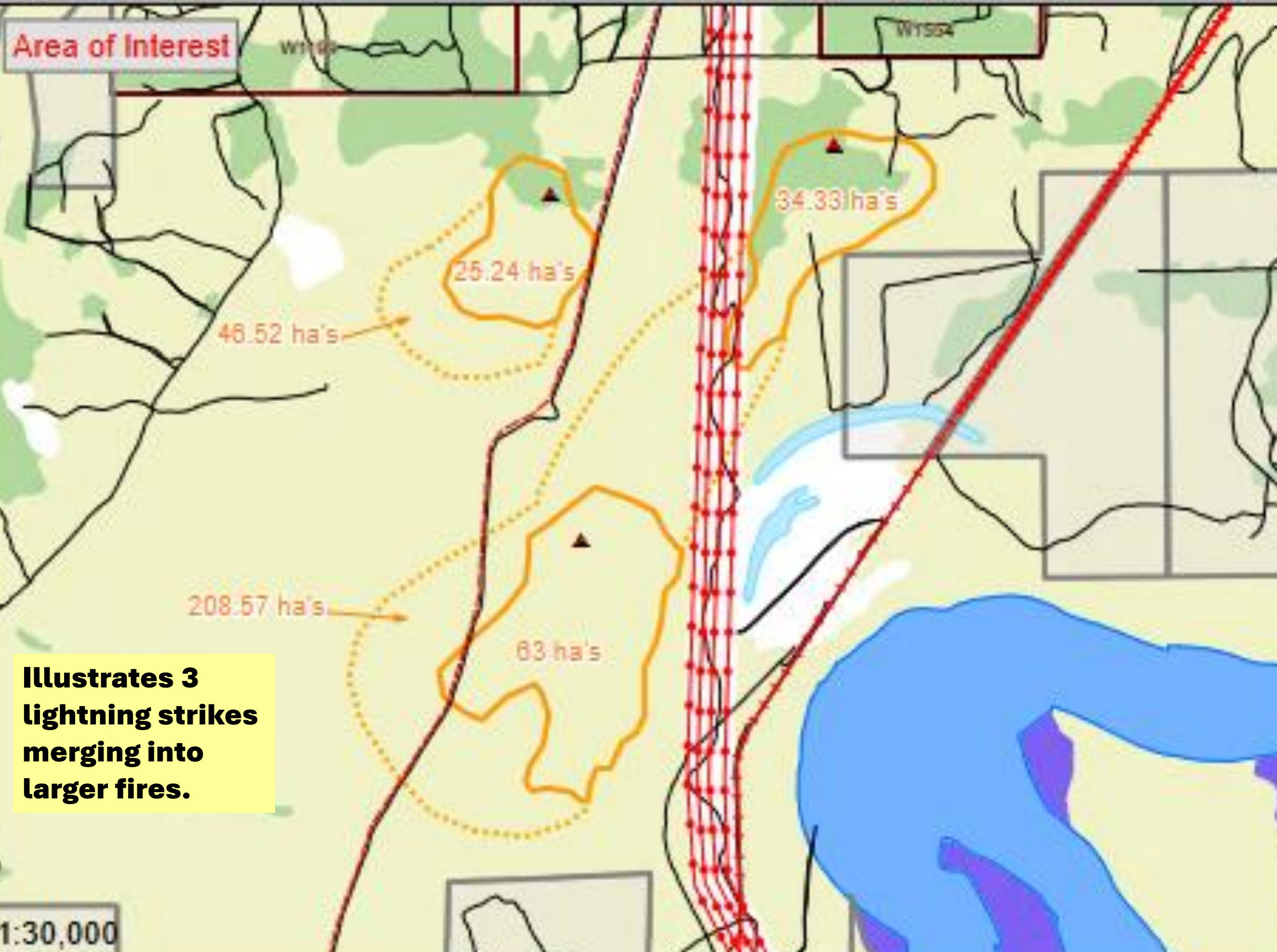
Stuart Nechako Natural Resource District

Clip of larger map, illustrating where in the landscape the wildfire has occurred.

Quesnel Natural Resource District

1:1,750,000

Area of Interest



Illustrates 3 lightning strikes merging into larger fires.

1:30,000

FIRE STRIKES BCWS GETS THE CALL

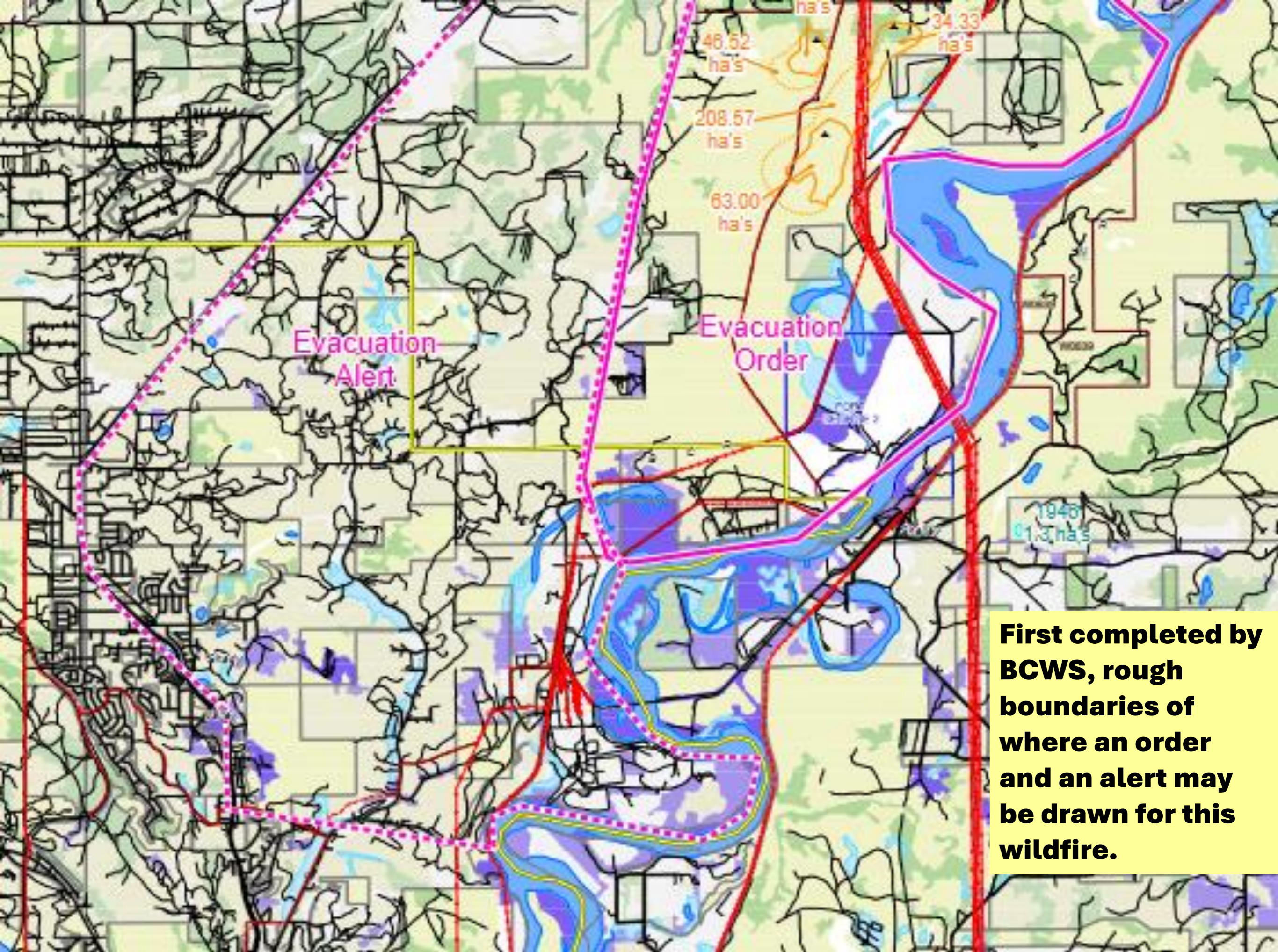
Typically, a wildfire gets reported to *5555 (the Provincial Wildfire Reporting Centre in Victoria). The report is then forwarded to the appropriate Fire Centre where it is reviewed and a response decision is made.



RESOURCE STRATEGIC WILDFIRE ALLOCATION PROCESS

1. Human life and Safety
2. Property
3. High environmental values
4. Resource values





Evacuation
Alert

Evacuation
Order

First completed by BCWS, rough boundaries of where an order and an alert may be drawn for this wildfire.



RECOMMENDATIONS CALL

- *BCWS calls EMCR to report on the wildfire risk and that a recommendation is being made to put areas under evacuation alert/order.*
- *Based on the impacted areas, EMCR will determine which local governments/First Nations need to be notified. They subsequently set up a call with those representatives, EMCR and BCWS where BCWS will relay details about the wildfire and outline the recommended order/alert areas.*
- *Each representative is given an opportunity to ask questions before deciding to issue an order/alert and if so, defining the boundaries.*

STANDARD RESPONSE GOALS

1. Safety and health of all responders
2. Save lives
3. Reduce suffering
4. Protected public health
5. Protect critical infrastructure
6. Protect property
7. Protect the environment
8. Reduce economic & social losses





REGIONAL DISTRICT
of Fraser-Fort George

April 11, 2025

DECLARATION OF STATE OF LOCAL EMERGENCY

ORDER

WHEREAS there is a threat of wildland interface fire within the jurisdiction of the Regional District of Fraser-Fort George:

AND WHEREAS residences and transportation routes are likely to be impacted by the wildland interface fire and people and property are directly threatened:

AND WHEREAS this wildland interface fire emergency requires prompt coordination of action or special regulation of persons or property to protect the health, safety, or welfare of people or to limit damage to property:

NOW THEREFORE:

IT IS HEREBY DECLARED, pursuant to Section 95 (1) of the *Emergency and Disaster Management Act* that a state of local emergency exists in Electoral Areas 'A & F' due to potential damage and threat to persons and property by the wildland interface fire and that alleviating or mitigating the predicted impacts will be hampered without accessing and using emergency powers:

ORDERED by the Chairperson, per Section 97 (1) of the *Emergency and Disaster Management Act*, the state of local emergency will remain in force for fourteen days, until August 25, 2025 at midnight unless cancelled by order of Regional District of Fraser-Fort George or the Minister of Emergency Management and Climate Readiness, or extended by the Regional District of Fraser-Fort George with the approval of the Minister of Emergency Management and Climate Readiness.

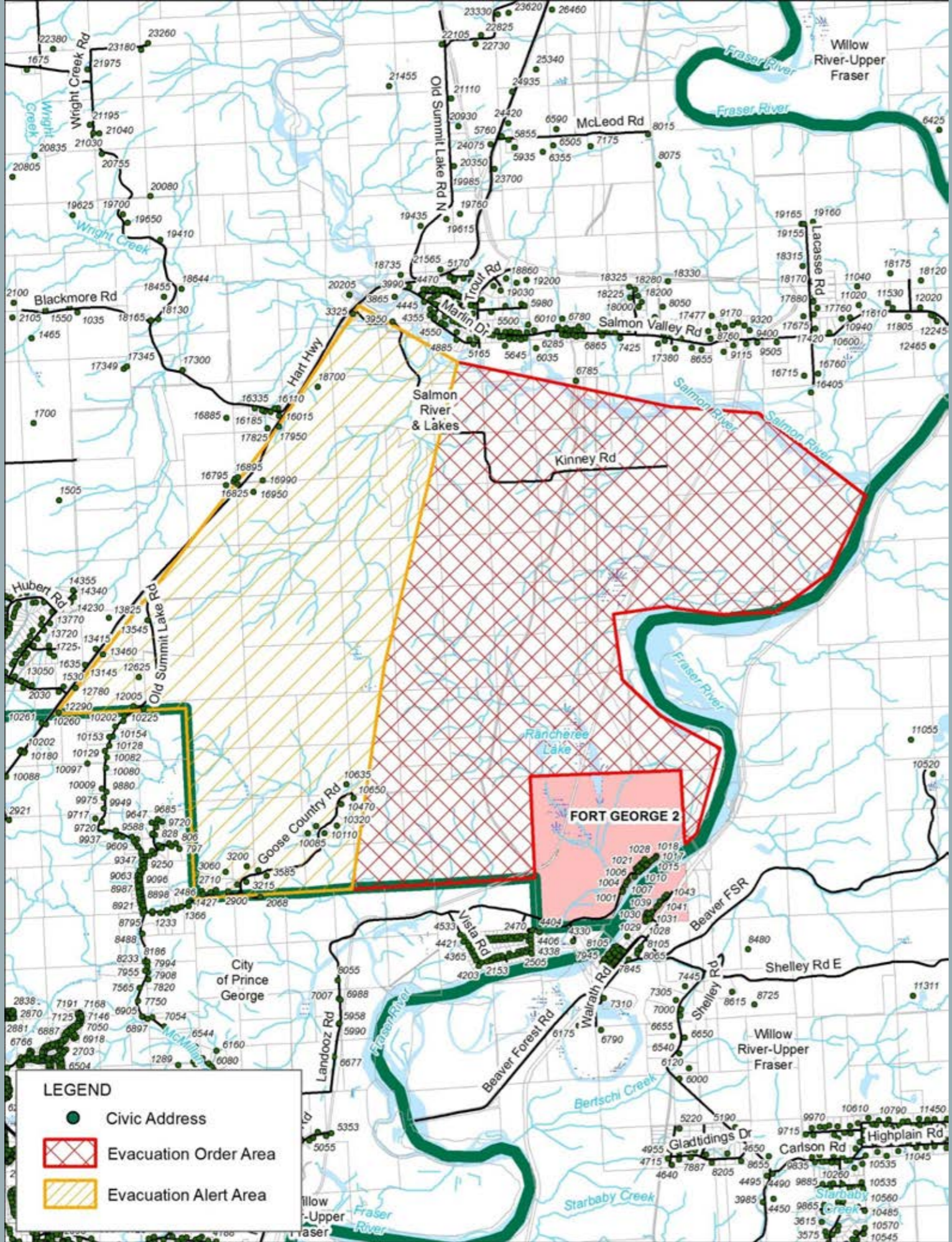
Example SOLS – for
drill purposes only

Joe Blow

Joe Blow
Chairperson

STATE OF LOCAL EMERGENCY

It is the Local State of Emergency declaration that grants the authority for a community EOC to enact powers under EDMA which include entering onto private property to manage danger trees, protect homes etc.



RDFFG

OVERVIEW
ORDER &
ALERT AREAS

Example of how the RDFFG may refine the boundaries of the Alert and Evacuation Orders – based on the draft boundaries provided by BCWS.



REGIONAL DISTRICT
of Fraser-Fort George

EVACUATION ORDER

April 11, 2025 – 17:30 hrs.

Table River Wildfire – F12345

ELECTORAL AREAS 'A & F'

The Regional District of Fraser-Fort George is issuing an evacuation order due to an active wildland interface fire near Shelley and Lheidli T'enneh First Nation (Table River), northeast of Prince George. The evacuation order is in effect for the area shown on the attached map.

Based on this information, an order pursuant to the Authority of Section 107(1) of the Emergency and Disaster Management Act to evacuate these areas has been authorized in the interest of life and safety.

YOU MUST LEAVE THIS AREA IMMEDIATELY. CITIZENS MUST REMAIN AWAY FROM THE EVACUATION ORDER AREA AS CONDITIONS MAY CHANGE UNEXPECTEDLY AND FIRST RESPONDERS WILL NOT BE ABLE TO ASSIST THOSE IN THE EVACUATION ORDER AREA.

The Regional District of Fraser-Fort George's Emergency Operations Centre is activated.

Residents in the evacuation order area are required to contact the Regional District.

The Regional District will make arrangements for the provision of Emergency Support Services (ESS) such as food and lodging as well as livestock relocation, feed and housing expenses if needed.

Please call us to arrange ESS and livestock assistance at the numbers below:

1-250-960-4400

(Toll Free 1-800-667-1959)

These numbers are answered 24 hours a day

The public can find updated information at the RDFFG website at rdffg.ca.

Sally Fields, Director
Emergency Operations Centre
Regional District of Fraser-Fort George

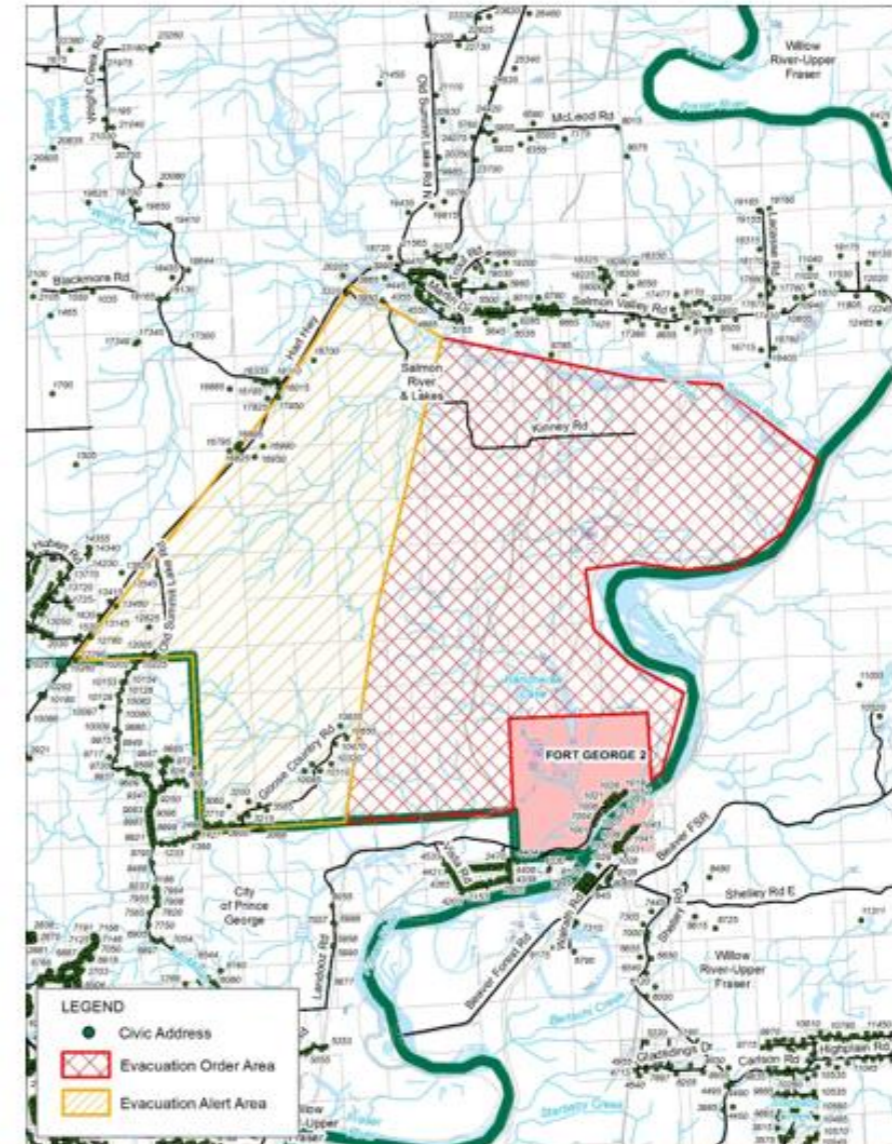
Regional District of Fraser-Fort George Main Office: 155 George Street, Prince George, BC V2L 1P8
TEL: 250-960-4400 • Fax: 250-563-7520 • Toll Free: 1-800-667-1959 • rdffg.ca • facebook.com/RDFFG



REGIONAL DISTRICT
of Fraser-Fort George

EVACUATION ORDER

April 11, 2025 – 17:30 hrs.



**Example Evacuation
Order – for drill
purposes only**

Regional District of Fraser-Fort George Main Office: 155 George Street, Prince George, BC V2L 1P8
TEL: 250-960-4400 • Fax: 250-563-7520 • Toll Free: 1-800-667-1959 • rdffg.ca • facebook.com/RDFFG

LHEIDLI
T'ENNEH
NATION





Lheidli T'enneh
Wheni Lheidli T'enneh ts'inli

Emergency Operations Centre (EOC) Activation Form

****Date:**** _____

****Time:**** _____

Emergency Event Description:

- Natural Disaster
- Technological Incident
- Human-caused Event
- Other (please specify): _____

Detailed Description of the Emergency Event:

Activation Level:

- Level 3: Full Activation
- Level 2: Partial Activation
- Level 1: Monitoring and Assessment

EOC Location:

EOC Director:

Notified Parties (please check when completed):

- EOC Staff
- Community Leaders
- Local Government Agencies
- Provincial Authorities
- First Responders
- Utility Providers
- Media
- General Public

Additional Remarks:

Example EOC Activation – for drill purposes only



Lheidli T'enneh
Wheni Lheidli T'enneh ts'inli

EOC Activation Authorization

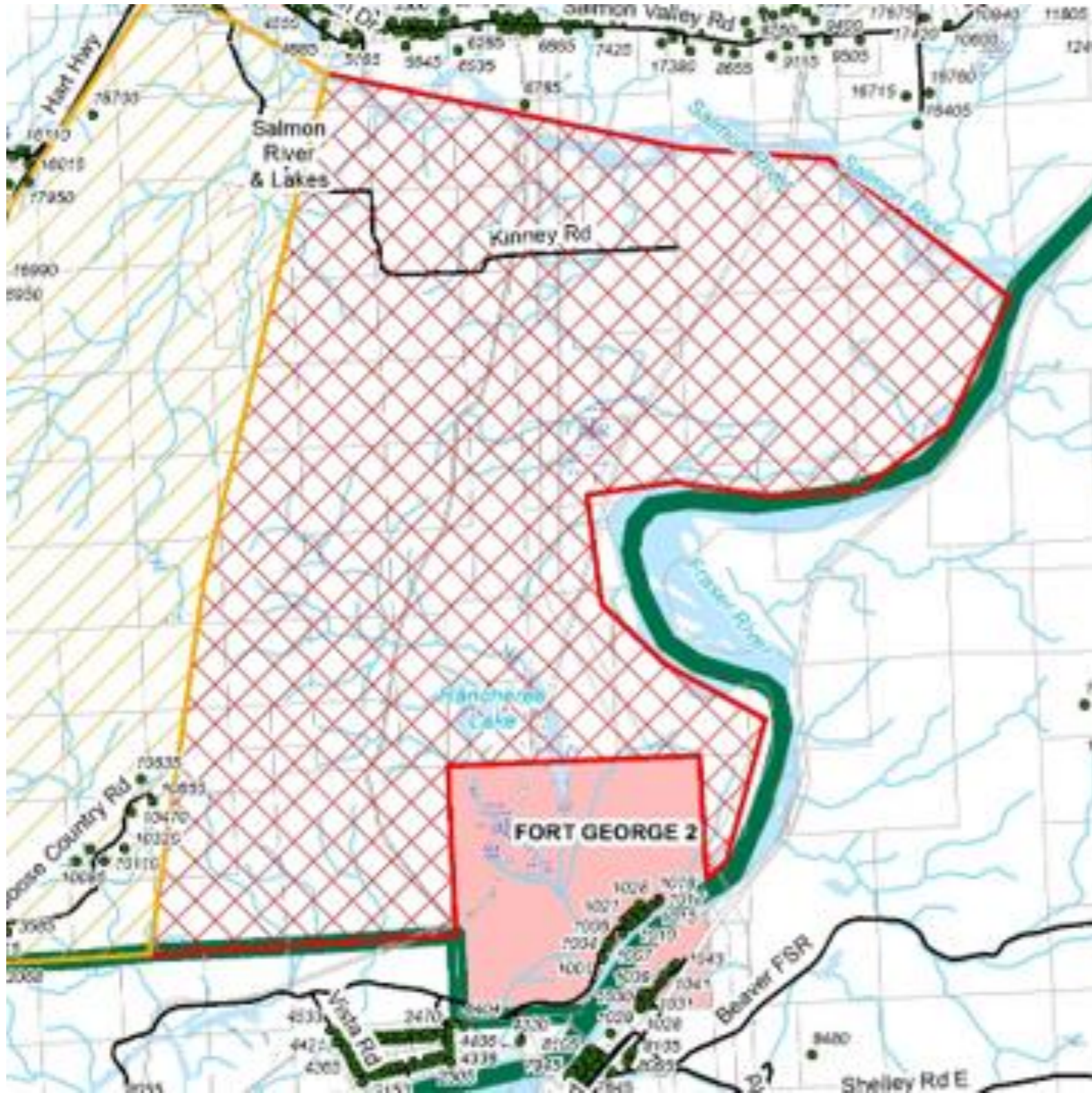
I, _____, as the Chief of the Lheidli T'enneh community, hereby authorize the activation of the Emergency Operations Centre (EOC) for the above-described emergency event, effective immediately.

****Chief's Signature:**** _____

****Printed Name:**** _____

****Date:**** _____

EOC ACTIVATION



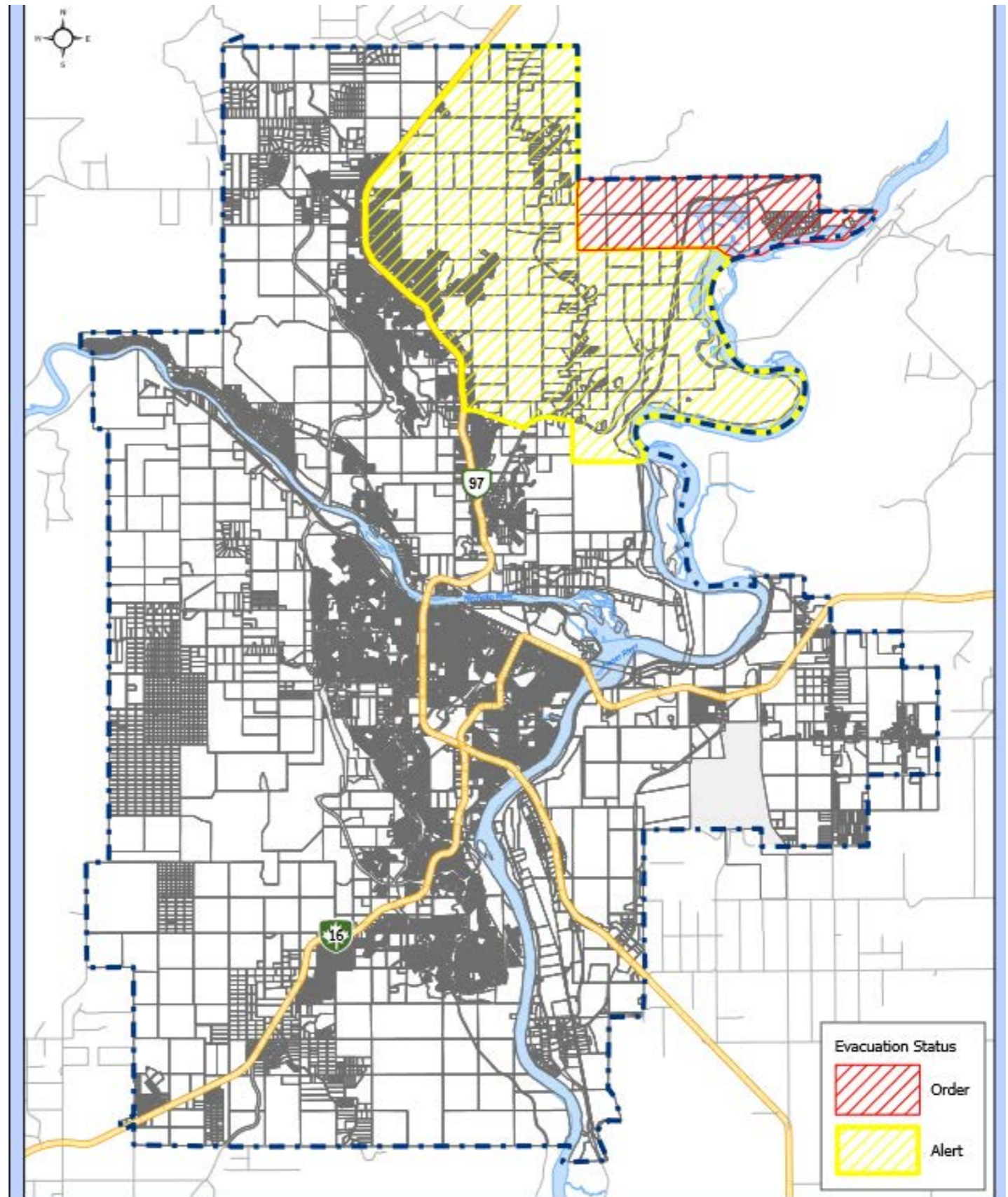
Example of
Evacuation Order
boundary used by
the Lheidli T'enneh
Nation – for drill
purposes only

EVACUATION
ORDER

CITY PG

OVERVIEW ORDER & ALERT AREAS

*Example of boundaries
established by the City of
PG for the Order and
Alert – for drill purposes
only*





EVACUATION ALERT

SALMON VALLEY WILDFIRE - G12345
OCTOBER 29TH, 2024 - 1800 HRS

Upon recommendation from BC Wildfire, An Evacuation Alert has been issued by the City of Prince George effective October 29th, 2024 at 1800 hrs due to an active wildland interface fire located north of city limits within the boundaries of the Regional District of Fraser Fort-George.

Because of the **potential danger to life and health**, the City of Prince George has issued an **Evacuation Alert** for the following areas:

ALL PROPERTIES NOT UNDER EVACUATION ORDER EAST OF HIGHWAY 97, NORTH OF NORANDA ROAD E AND NORTHWOOD PULPMILL ROAD TO THE MUNICIPAL BOUNDARIES OF THE CITY OF PRINCE GEORGE.

An Evacuation Alert has been issued to prepare you to evacuate your premises or property should it be found necessary. Residents will be given as much advance notice as possible prior to evacuation; however you may receive limited notice due to changing conditions.

WHAT YOU SHOULD DO:

- Locate all family members and designate a meeting area outside the evacuation alert area, should an evacuation order be made while family members are separated.
- Pack essential items such as government-issued ID, medications, important documents (e.g., insurance, and mortgage / tenancy information), and immediate care needs for dependents.
- Prepare to evacuate disabled persons, children, and/or neighbors if assistance is needed.
- Prepare to take pets with you and move livestock to a safe area (if possible).
- Arrange transportation for all your household members. Fill the gas tanks of personal vehicles that will be used in the evacuation. If transportation assistance will be needed to evacuate, a phone number will be provided on the evacuation order.
- Review your home or tenant insurance policy to understand what coverage you may have for lodging and food in the event of being evacuated. Most basic insurance policies cover living expenses during an evacuation.
- Arrange accommodation for all members of the residence. If possible, plan to stay with family or friends as accommodations may be in short supply.
- If you will require government assistance to meet your basic needs if evacuated, like lodging and food, Emergency Support Services will be available. Create a profile at ess.gov.bc.ca.

Example Evacuation Alert – for drill purposes only

- Wait for an evacuation order to be issued before evacuating. If you evacuate before being directed or authorized, you may not yet qualify for Emergency Support Services should you need it, as resources will be focused on those who have been ordered to evacuate.
- Monitor local radio stations and the City of Prince George website (www.princegeorge.ca) for information on evacuation orders and the location of reception centre(s). If you can meet your own basic needs if evacuated, you do not need to go to a reception centre.

Mayor Simon Yu
City of Prince George



EVACUATION ORDER

SALMON VALLEY WILDFIRE – G12345

OCTOBER 29TH, 2024 - 1800

Whereas a declaration of a state of local emergency was declared on October 29, 2024 by the City of Prince George pursuant to Section 95 of the Emergency and Disaster Management Act due to a active interface wildfire threatening properties in the jurisdiction of the City of Prince George

And pursuant to Section 107 (1)(c) of the Emergency and Disaster Management Act an Evacuation Order has been issued by the City of Prince George due to immediate danger to life safety caused by:

An active wildland interface fire located north of city limits within the boundaries of the Regional District of Fraser Fort-George.

Members of the RCMP, Prince George Fire Rescue and other applicable agencies will be expediting this action.

This Evacuation Order is in effect for the following areas:

All properties located on Eichler Road , Landooz Road (north of Prince George Sawmill), Vista Rd, Estate Rd, Progress Rd, Lloyd Rd, Hanet Rd, Kubin Rd.

YOU MUST LEAVE THE AREA IMMEDIATELY

WHAT YOU SHOULD DO:

- Exit the area immediately and call 778-675-3735 to register with Emergency Support Services, pre-registration is available at <https://ess.gov.bc.ca>
- If you need transportation assistance from the area, advise the person providing this notice or call 250-561-7600 or 311 in city limits.
- Shut off all gas and electrical appliances, other than refrigerators and freezers.
- Close all windows and doors.
- Close gates (latch) but do not lock.
- Gather your family and, if you have room, take a neighbor or someone needing transportation. Do not use more vehicles than you have to.
- Take critical items (medicine, purse, wallet, keys, clothing and personal items) only if they are immediately available. Take pets in pet kennels, or on leash, and bring pet food.
- Do not use the telephone unless you need emergency services
- If you require assistance, Emergency Support Services is available to assist with temporary food and lodging. Please contact 778-675-3735 to register for these services and receive instructions on hotel location.
- Further information and updates will be available on the City of Prince George website, www.princegeorge.ca or by contacting 250-561-7600.

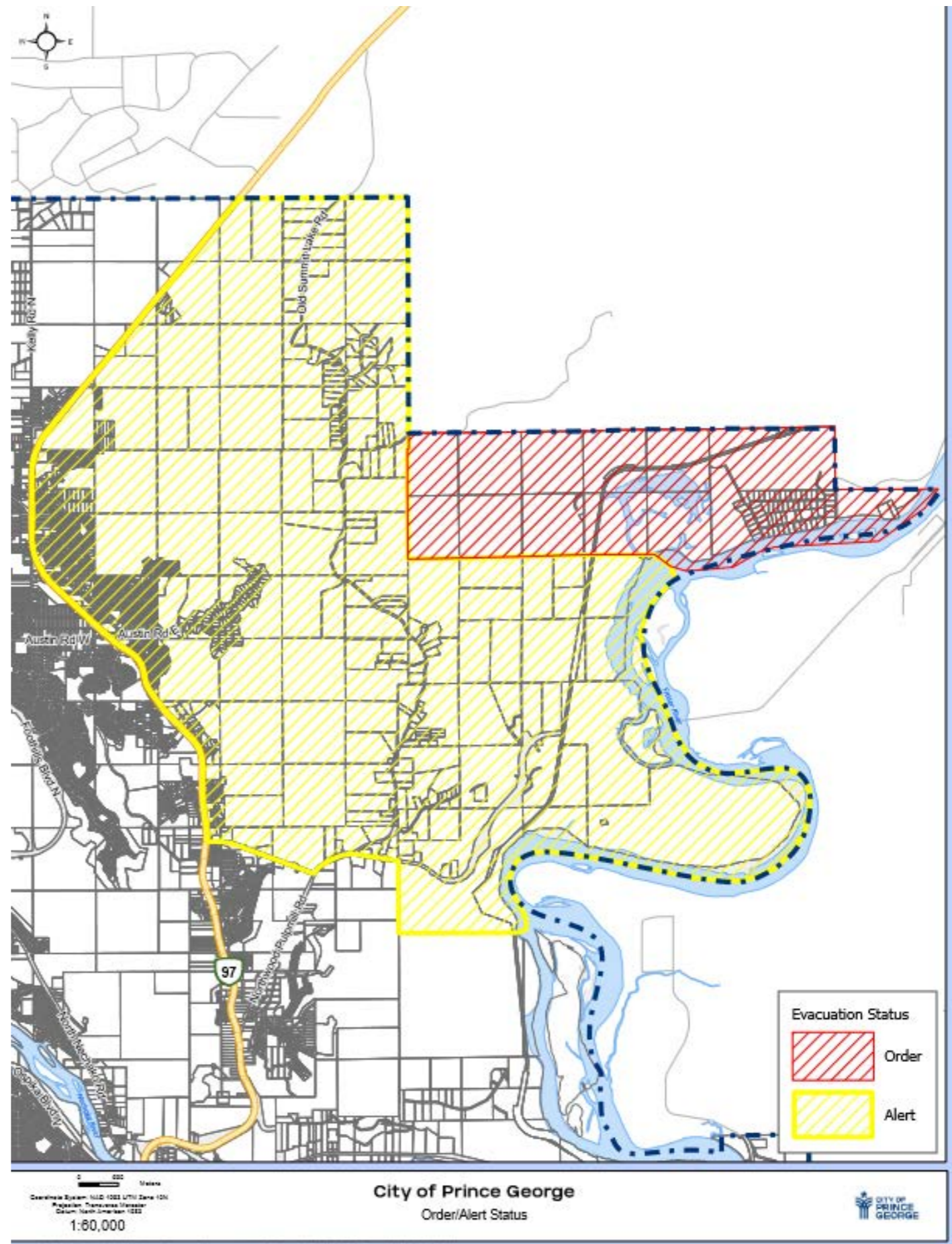
Simon Yu
City of Prince George

Example Evacuation Order – for drill purposes only

CITY OF PG

DETAILED ORDER AND ALERT AREAS

*Example of boundaries
established by the City of
PG for the Order and
Alert – for drill purposes
only*





1100 Patricia Blvd. T 250.561.7600
Prince George, BC F 250.612.5605
Canada, V2L 3V9 PrinceGeorge.ca

DECLARATION OF STATE OF LOCAL EMERGENCY

ORDER

Date: October 29th, 2024 – 1800 hrs
Instrument Number: EXERCISESOLE-001

WHEREAS there is an active wildland interface fire located north of city limits within the boundaries of the Regional District of Fraser Fort-George that likely will impact properties within the jurisdiction of the City of Prince George;

AND WHEREAS the active wildland interface fire poses an existing or imminent threat to people and property within the area north of the Nechako River within the municipal boundaries of the City of Prince George

AND WHEREAS prompt coordination of action or special regulation of persons or property is required to protect the health, safety or well-being of persons or the safety of property or objects or sites of heritage value;

NOW THEREFORE:

I DECLARE, pursuant to Section 95 (1) of the *Emergency and Disaster Management Act* that a state of local emergency exists in all municipal areas north of the Nechako River due to an active wildland interface fire and related hazards and/or preclusion of emergency services access;

Per Section 97 (1) of the *Emergency and Disaster Management Act*, the state of local emergency will remain in force for fourteen days, until the end of November 12th, 2024 unless cancelled by the City of Prince George or the Minister of Emergency Management and Climate Readiness or extended by the City of Prince George with the approval of the Minister of Emergency Management and Climate Readiness.

*Simon Yu, Mayor
City of Prince George*



It is the Local State of Emergency declaration that grants the authority for a community EOC to enact powers under EDMA which include entering onto private property to manage danger trees, protect homes etc.

Example of a Declaration of a Local State of Emergency – for drill purposes only

BROADCAST INTRUSIVE ALERTING CALL

Alert Ready is a Canada-wide system that allows government officials in each province and territory to issue public safety alerts through major television and radio broadcasters, as well as compatible wireless devices. This system is only used during large-scale disasters or emergencies where loss of life is possible or imminent.

The Alert Ready system is tested twice a year across Canada, in May and November.

[BC Emergency Alerts - Province of British Columbia](#)

EMCR organizes this call and invites:

- Primary EOCs (Local government and First Nations)
- Affected Ministries
- Impacted Utilities
- Impacted Rail and O&G organizations
- NGOs that could support the Primary EOCs
- Host communities for evacuees



OPERATIONS CALL



This call is to bring all those that have an operational function in the evacuation of a community together to discuss supports and next steps related to the FN or LA affected

EMCR organizes this call and invites:

- Local government and First Nations
- Emergency Management personnel in Ministries, Agencies, and Organizations, and
- Subject Matter Experts from event specific Ministries



INFORMATION CALL



This call is for all organizations involved in Emergency Management that may need situational awareness of an event; it is information only with no interactive discussion component.

Lunch



QUESTIONS DISCUSSION

KEY TAKE AWAYS FROM YOUR EMERGENCY COORDINATOR TEAMS

- ❖ BCWS makes recommendations to limit wildfire impact to values, but we have no jurisdictional authority
- ❖ While as a program, we operate across all four pillars of emergency management (Prevention/Preparedness/Response/Recovery) during an incident, BCWS focus is incident stabilization/response
- ❖ During a wildfire, the RD takes on a supporting role – support for the responders (equipment, personnel, etc.), support for the community (evacuations), and support for individuals (food, shelter, etc.).
- ❖ Alert & Order boundaries are set with an abundance of caution and guided by BCWS recommendations
- ❖ RDFFG responsibility: the well-being of residents (people and animals) – we don't action wildfires (BCWS are the experts!)