



Lillooet and Area Community Wildfire Roundtable



June 27, 2022





Approach for the day

- We want to hear from you
- There are no wrong answers
- You don't need to be an expert
- Focus on wildfire **preparedness** not response or recovery

Ground rules

- Be respectful – be hard on the issue, not the person
- Recognize there are multiple perspectives
- More voices, fewer words





Outline

- About Fraser Basin Council
- Community Wildfire Roundtable
 - Proposed concept
 - Why - context
- What's underway, who's doing what
- Resources and Capacity
- Traditional burning, traditional knowledge
- Funding
- Next steps
- Questions and discussion – throughout





Fraser Basin Council

BC-wide non-profit organization, 38 directors from 4 orders of government and more

Vision: Social well-being supported by a vibrant economy and sustained by a healthy environment

Mandate: Advance sustainability solutions and practices in British Columbia

Convening multiple parties such as wildfire roundtables is a key part of the work FBC does



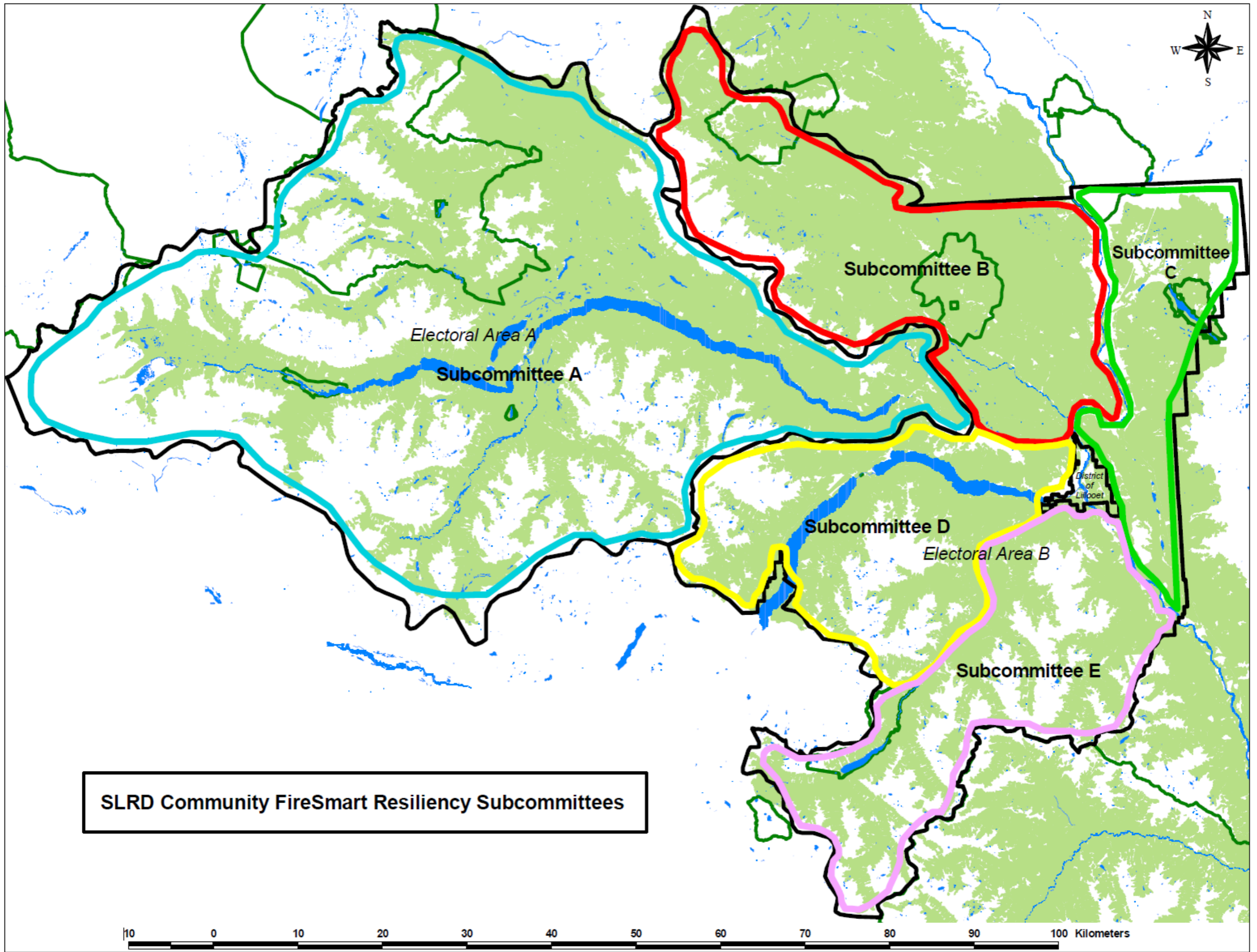


Community Wildfire Roundtable

Overall purpose is to ensure **good coordination and communication** about who's doing what around wildfire preparedness:

- FireSmart education
- Timber harvesting opportunities
- Fuel management
- Resources and capacity – volunteer fire departments, ranchers, agriculture sector, forest industry
- First Nations traditional burning





SLRD Community FireSmart Resiliency Subcommittees



Community Wildfire Roundtable

Purpose is to advance wildfire preparedness:

- **Help implement the plans being developed by SLRD**
- FireSmart education
- Fuel management treatments (commercial harvest, non-commercial fuel)
 - Primary fuel breaks
 - Interface treatments
- Egress

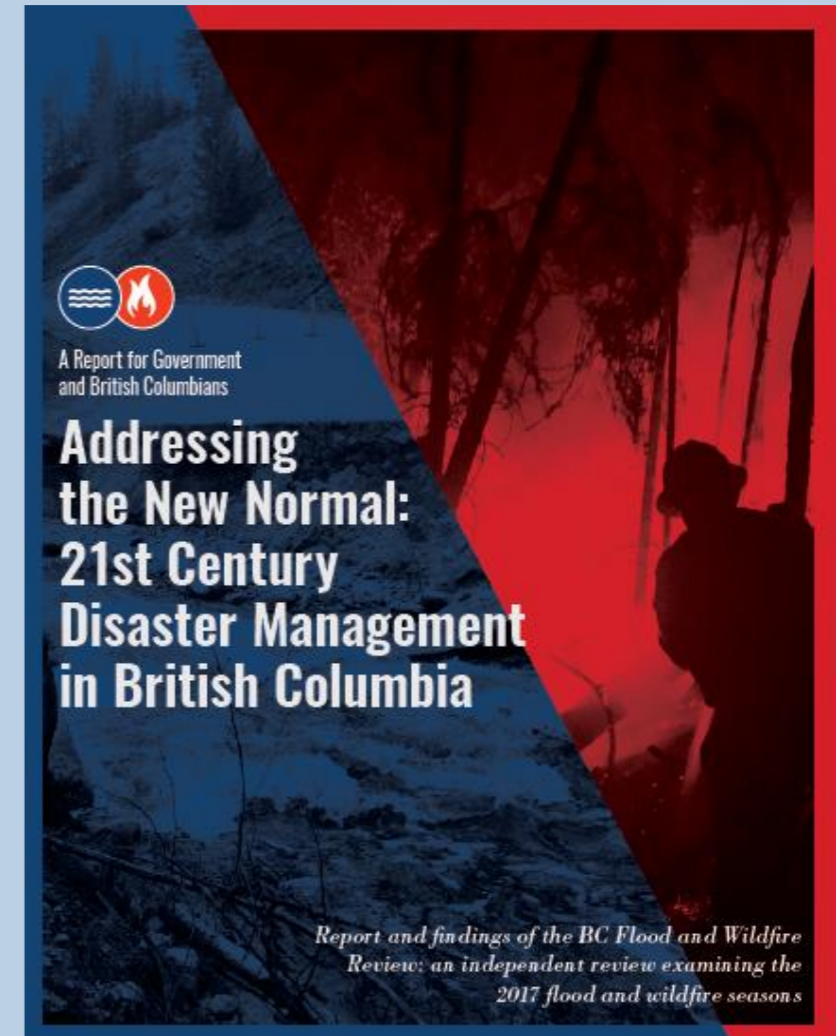




Community Wildfire Roundtable

...but also to address some Abbott and Chapman recommendations:

- Traditional burning, TEK
- Capacity and resources:
 - Volunteer fire departments
 - Ranchers, agriculture
 - Other





Community Wildfire Roundtable – pilot

FBC has a contribution agreement with BC Wildfire Service to support community wildfire roundtable pilots:

- Williams Lake and area
- Clearwater and Area
- Clinton and Area
- And any new areas with emerging interest

Concept built on what worked well in Williams Lake from 2007-2012





Community Wildfire Roundtable – context

A lot of money flowing around for:

- FireSmart education
- Community Wildfire Resiliency Plans
- Fuel management treatments
- Emergency evacuation route planning
- Training
- Equipment





Community Wildfire Preparedness Roundtable – context

Different organizations play different roles:

- Local government
 - Volunteer fire departments
- Fire brigades
- First Nations governments
- BC Ministry of Forests
 - BC Timber Sales
 - BC Wildfire Service





Community Wildfire Roundtable – context

Different organizations play different roles (continued):

- Forest industry
 - Forest licensees
 - Woodlot licensees
 - Community Forests
- Agriculture sector
- **Community FireSmart Resiliency Committees and subcommittees**

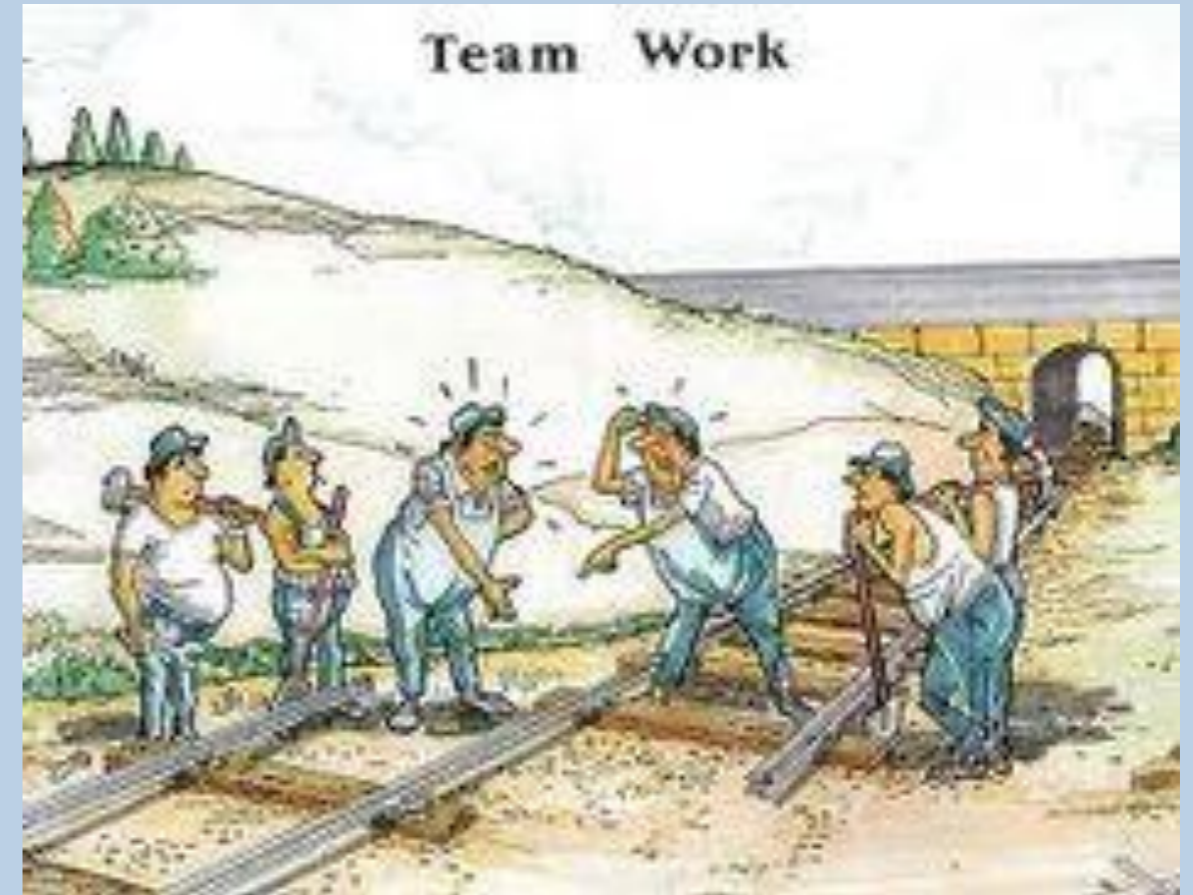




Community Wildfire Roundtable

It's happened before:

- Flurry of funding and activity
- Not coordinated
- Treatments done in illogical, ineffective places
- Duplication exists
- Gaps exist
- Challenging to know who's doing what
- Resources aren't maximized/leveraged





Community Wildfire Roundtable

Overall purpose is to ensure good coordination and communication about who's doing what around wildfire preparedness:

- **Help implement the plans being developed by SLRD**
- FireSmart education
- Timber harvesting opportunities
- Fuel management
- Resources and capacity – volunteer fire departments, ranchers, agriculture sector, forest industry
- First Nations traditional burning

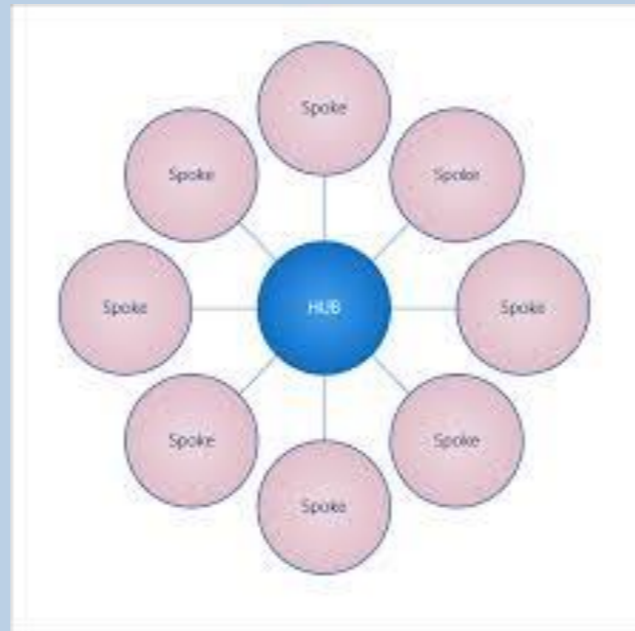




Community Wildfire Preparedness

What will FBC do?:

- Secretariat support – convene multiple organizations
- Help prepare funding applications
- Identify leveraging opportunities
- Connect people, opportunities and ideas

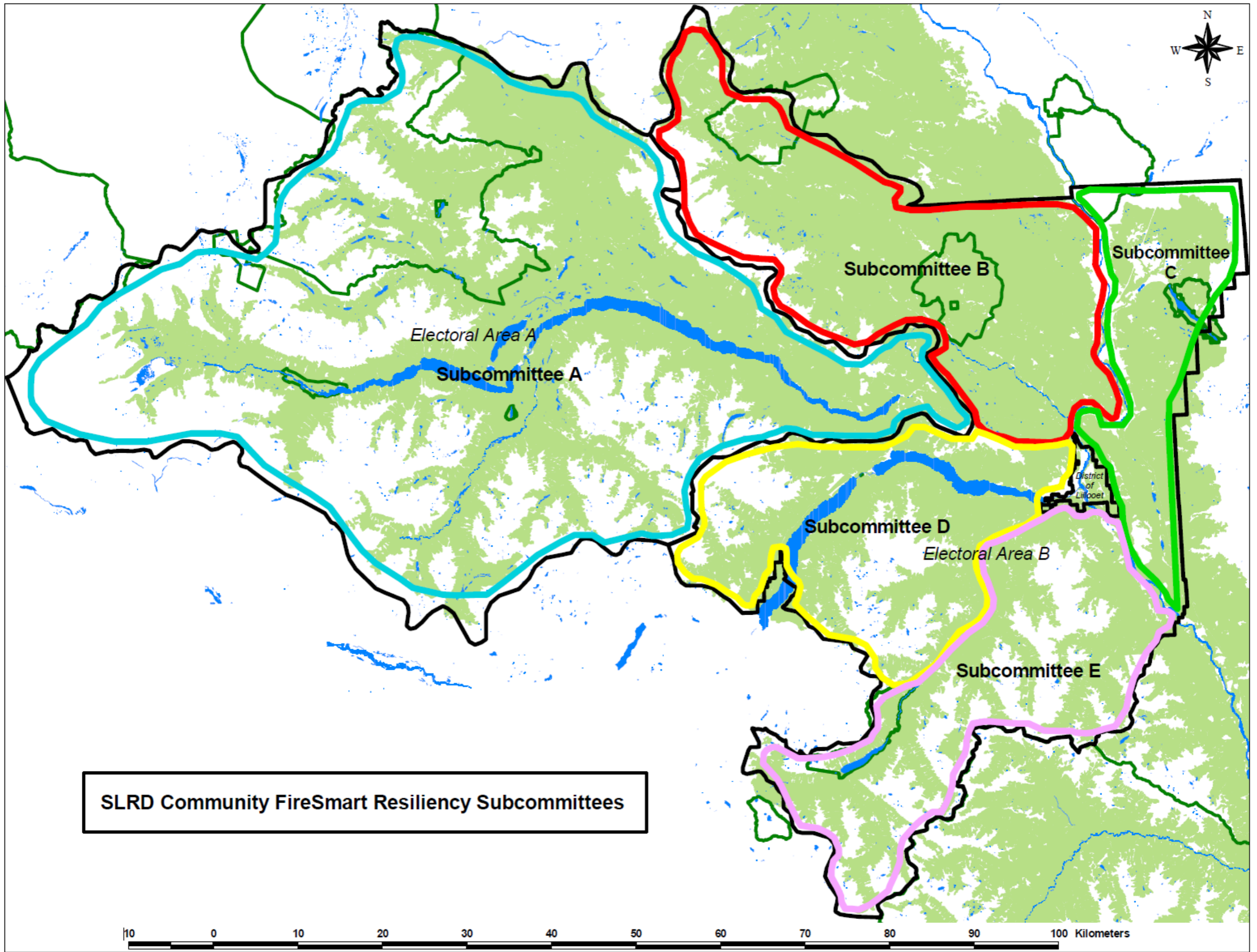




Next Steps

- Continue – form a roundtable?
- Terms of reference?
- Define geographic boundary





SLRD Community FireSmart Resiliency Subcommittees



Questions? Contact and more info:

Mike Simpson, MA, RPF

Consultant to FBC

mf_simpson@outlook.com

250-299-1202

www.wildfireroundtables.ca

