

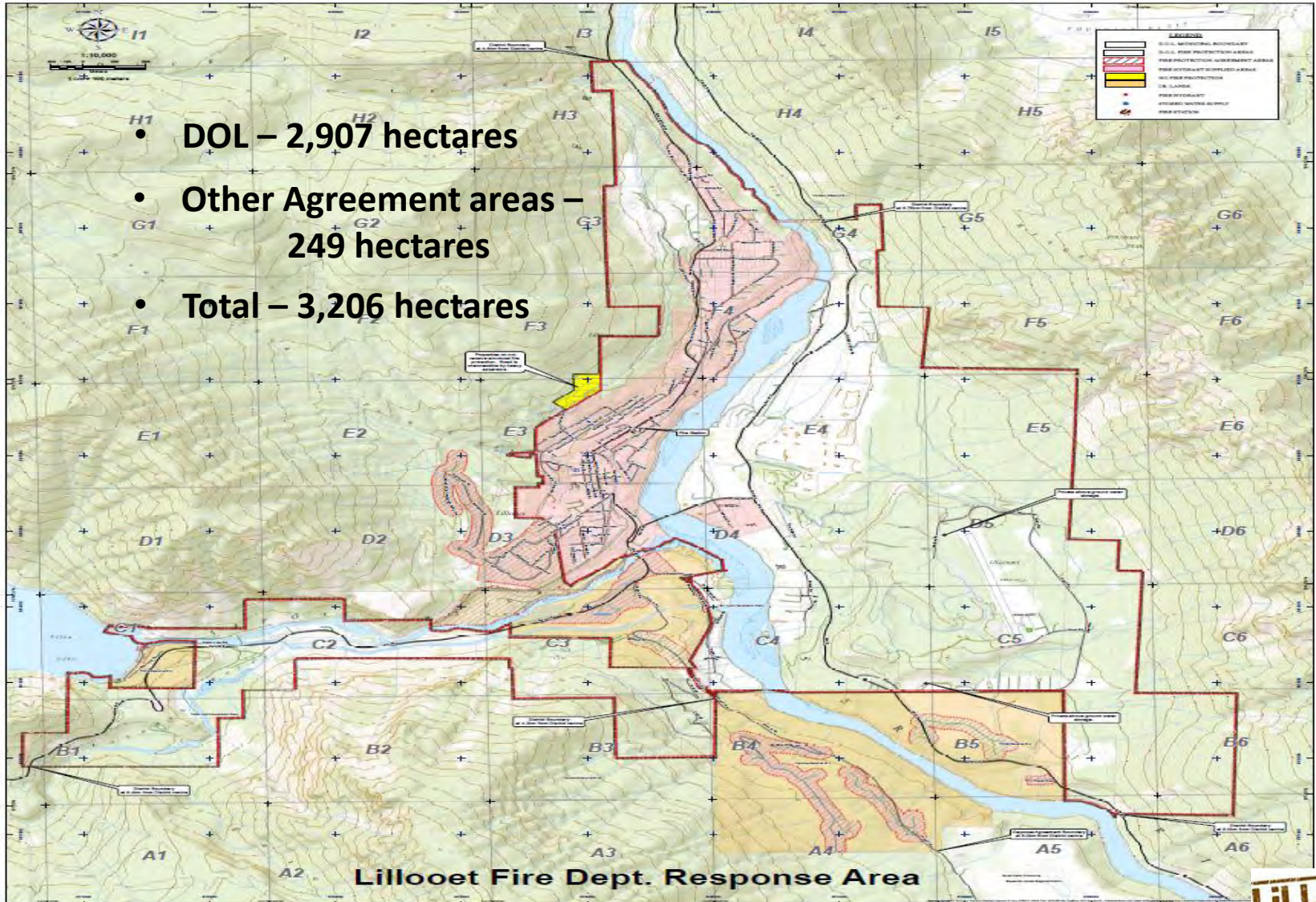
Protective Services 2022





Emergency Response Area

- DOL – 2,907 hectares
- Other Agreement areas – 249 hectares
- Total – 3,206 hectares





Community Wildfire Protection Plan





Community Wildfire Protection Plan

Community Wildfire Protection Plan

District of Lillooet

April 2012

(Updated July 2016)



R.P.F. Signature and Seal



Registered Professional Forester

Date: Sept 23/16

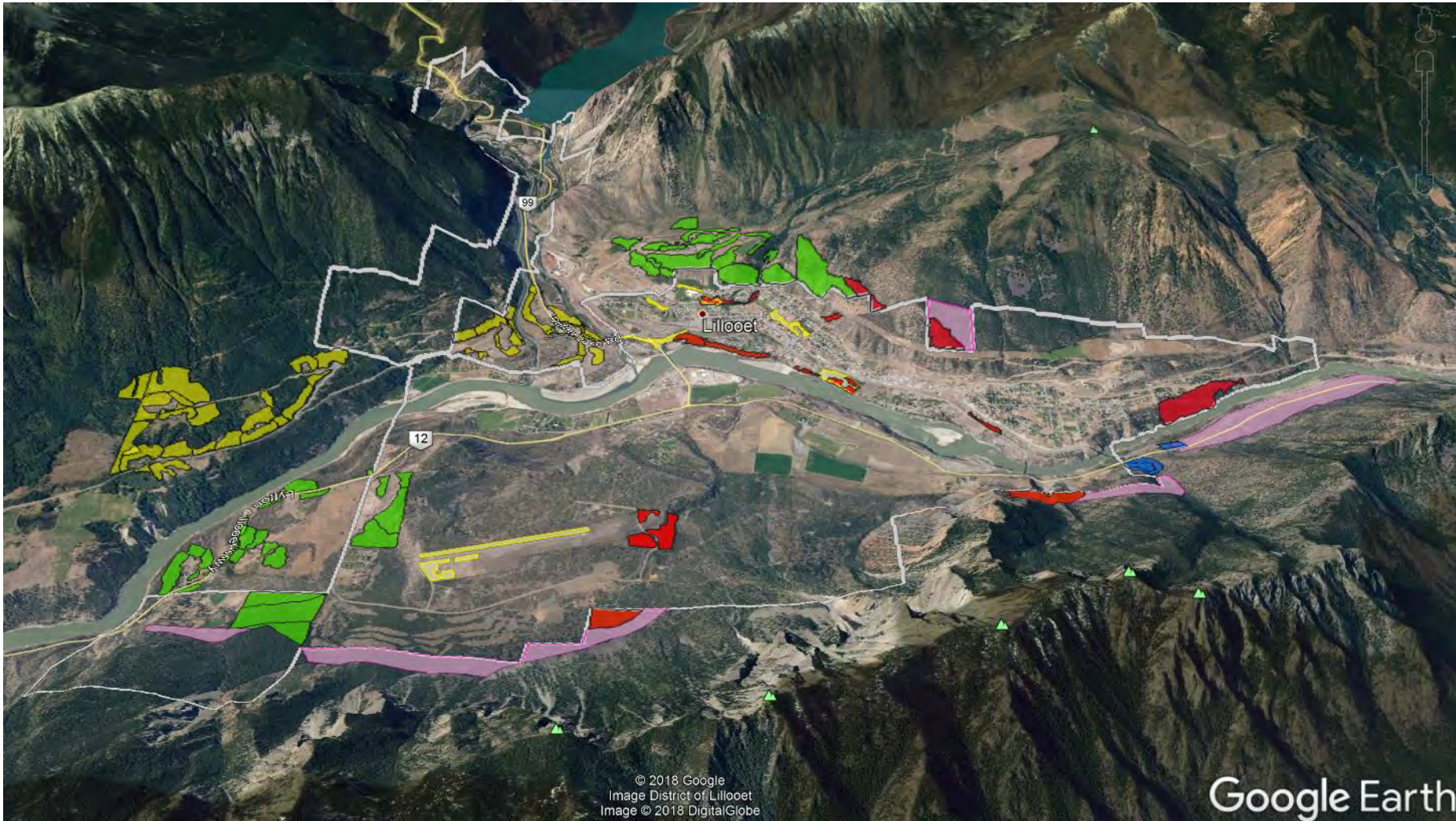


Submitted by
LANDSCOPE CONSULTING CORPORATION
Lillooet, British Columbia





Community Wildfire Protection Plan



Google Earth





Community Wildfire Protection Plan – Fuel Management





FireSmart



Mar. 17th  **FireSmart**
Canada

**OPEN HOUSE
& INFORMATION SESSION**

ARE YOU PREPARED?

Wildfire is a serious threat throughout Canada putting neighbourhoods, communities, environment resources, public and firefighter safety at risk every year.

Preparing for the threat of wildfire is a shared responsibility. From home owners, to industry and government we all have responsibility to lessen the effects of wildfire.

**Lillooet Recreation Centre, 990 Main Street
March 17th, 10am to 3pm**

Lillooet Fire Department in partnership with the local BC Wildfire Services will be holding an open house and information session. Its goals is to educate the public about FireSmart and what you as a home owner can do to prepare your property.

On hand will be the District of Lillooet's Community Wildfire Protection Plan (CWPP), examples of additional firefighting equipment for the home owner, Fire Department and BC Wildfire Services firefighting equipment and by a fire demonstration.

For more information contact:
Lillooet Fire Department
Tel: (250) 26-1334 or
Email: fire@lillooet.ca





FireSmart



GET FIRESMART™

FREE HELP WITH YARD WORK FOR WILDFIRE PREPAREDNESS AVAILABLE TO SENIORS AGED 65+



LILLOOET FIRESMART™ DAY

SATURDAY APRIL 30, 2022

REC CENTRE LAWN, 930 MAIN STREET • 11AM – 3PM

Information Booths: Lillooet's FireSmart program, emergency response, cultural burning, low-flammability landscaping, backyard burning, and more!

Demonstrations throughout the day! Curtain burner, rooftop sprinklers, and fire engine tours.

1 pm Presentation by BC Wildfire Service: Reflecting on the 2021 wildfire season.

BBQ + snacks: Enjoy lunch on us!






Community Planning

**Collaborative
EOC/ESS Training**

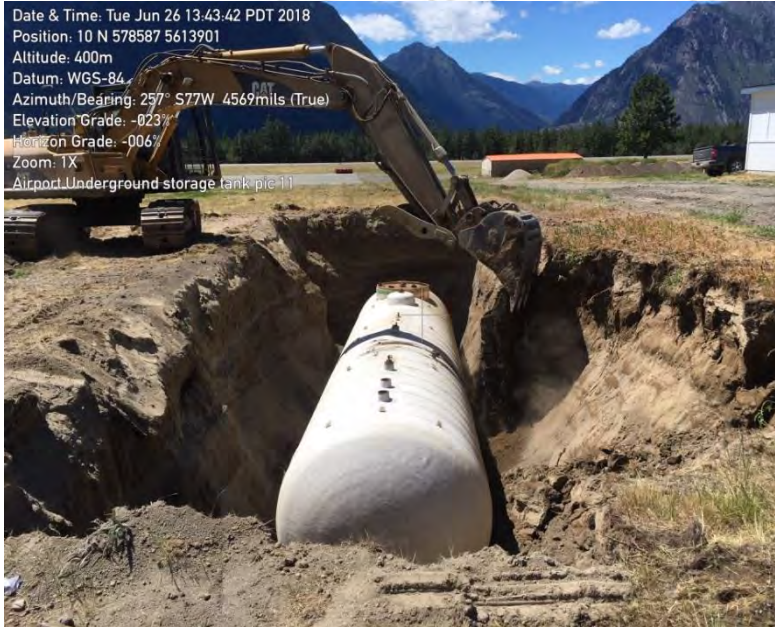


**Collaborative Emergency
Management meetings**



Community Planning

- Stone Place Road



- Lillooet Airport



Community Planning - Future

Structural Protection Unit



**Continued
Cross training**

Protective Services 2022

