



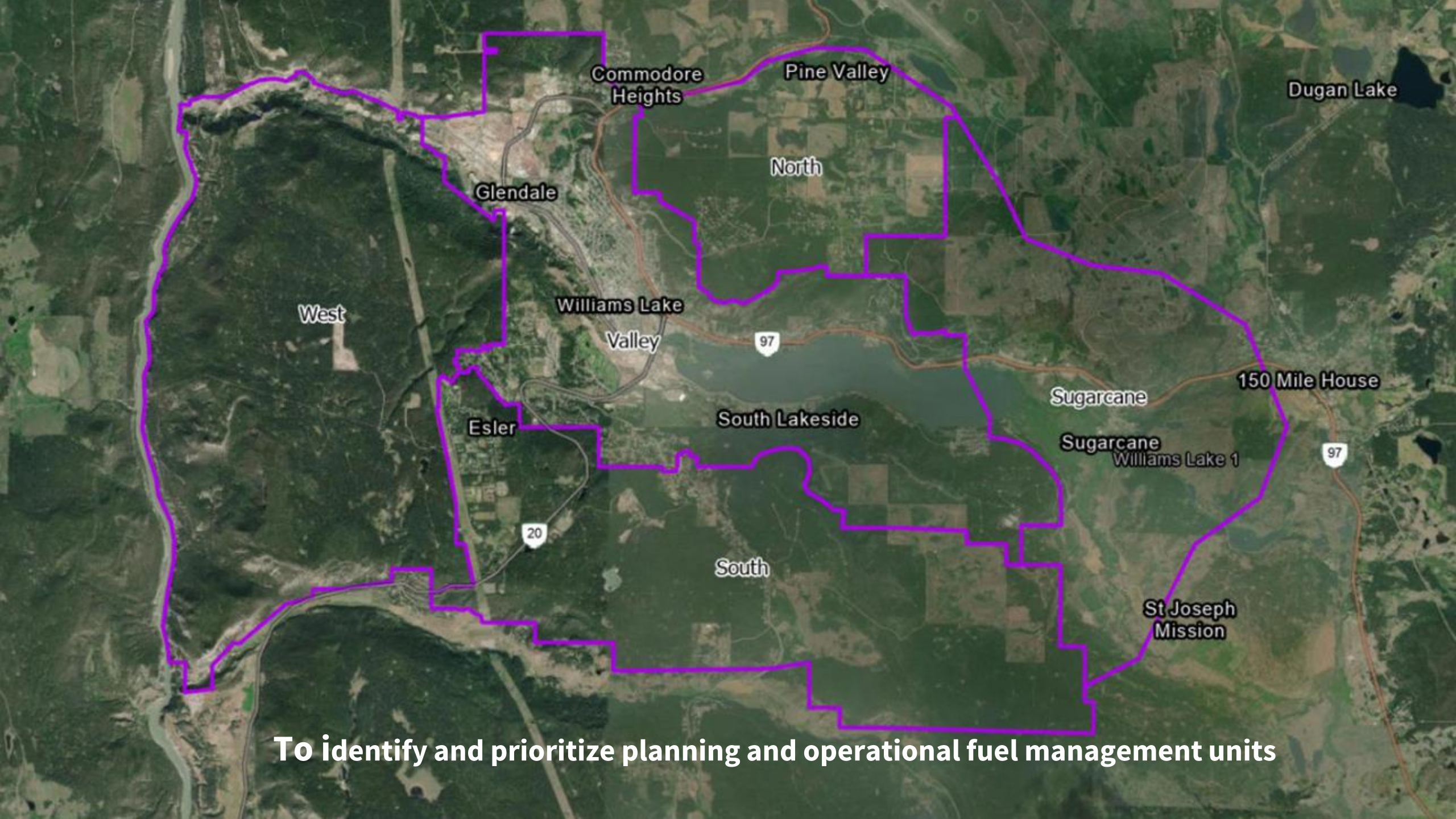
# Tactical Plan for Wildfire Risk Reduction

WILLIAMS LAKE AREA

# Outline

- Objectives of a Tactical Plan for WRR
- Methods
- Engagement/Collaboration
- Modelling

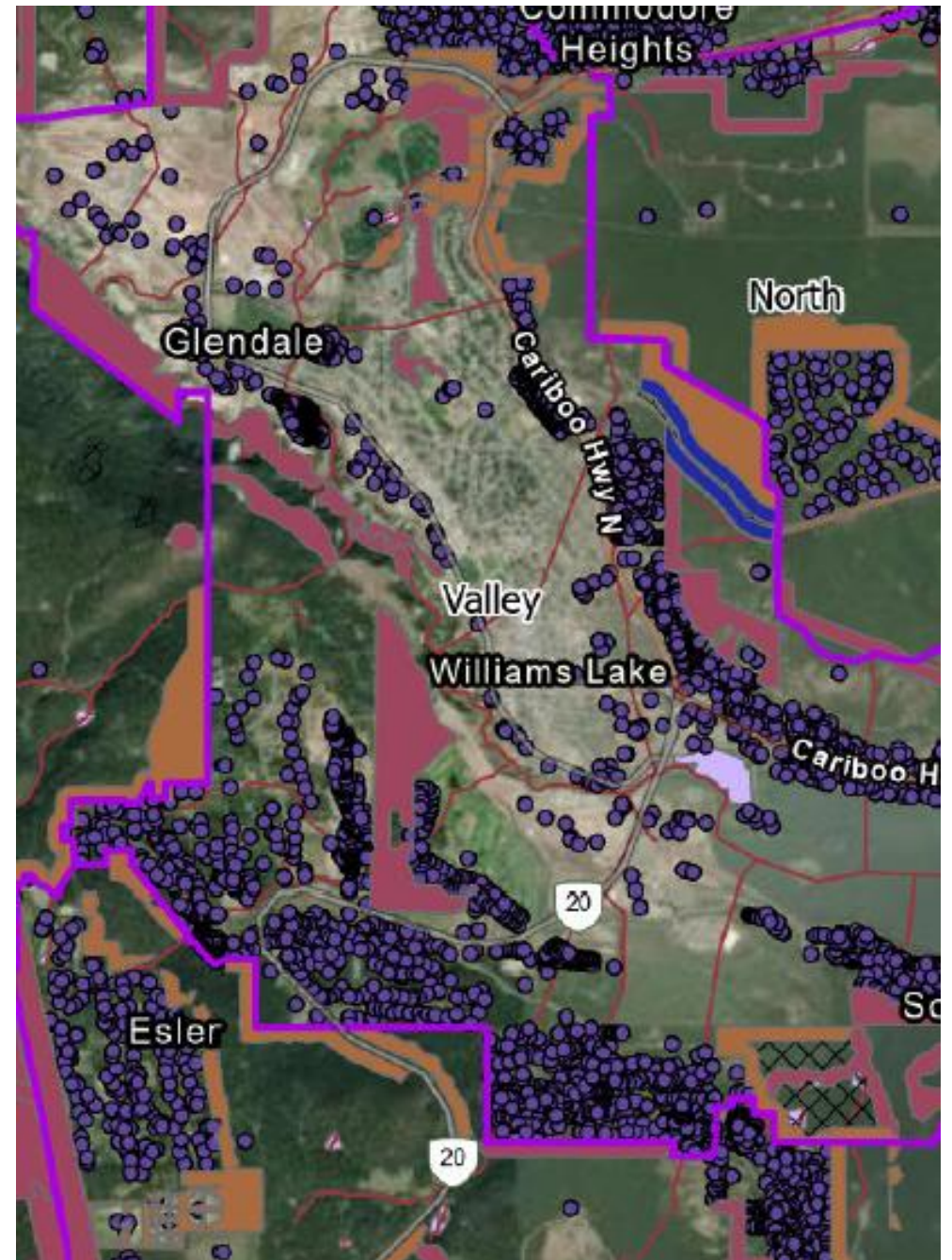




**To identify and prioritize planning and operational fuel management units**

# Methods

- Identify Values at Risk (VAR)
- Identify current and desired level of risk to VAR
- Identify and design units (WMU, WRRU, FTU/AMU)
- Prioritize planning and operational units



# Engagement & Collaboration

- Overlapping objectives and values
- Ensure tenure management objectives and operational plans are not obstructed



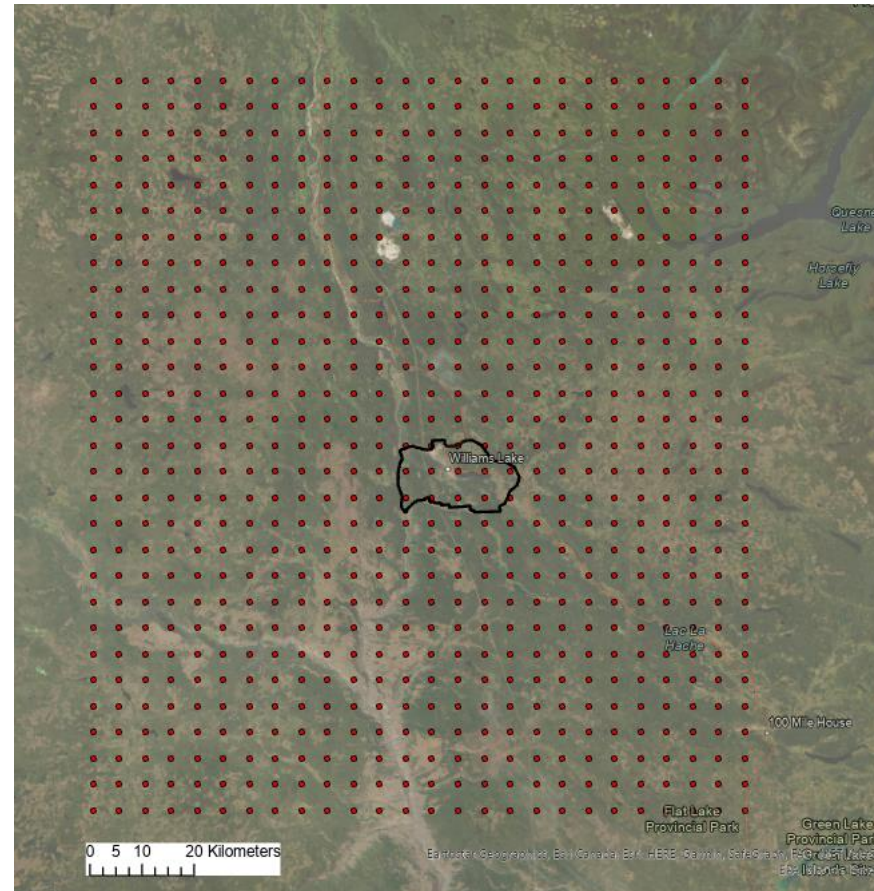
# Wildfire Modelling

- What is 'gridded wildfire modelling'
- Benefits
- Example results

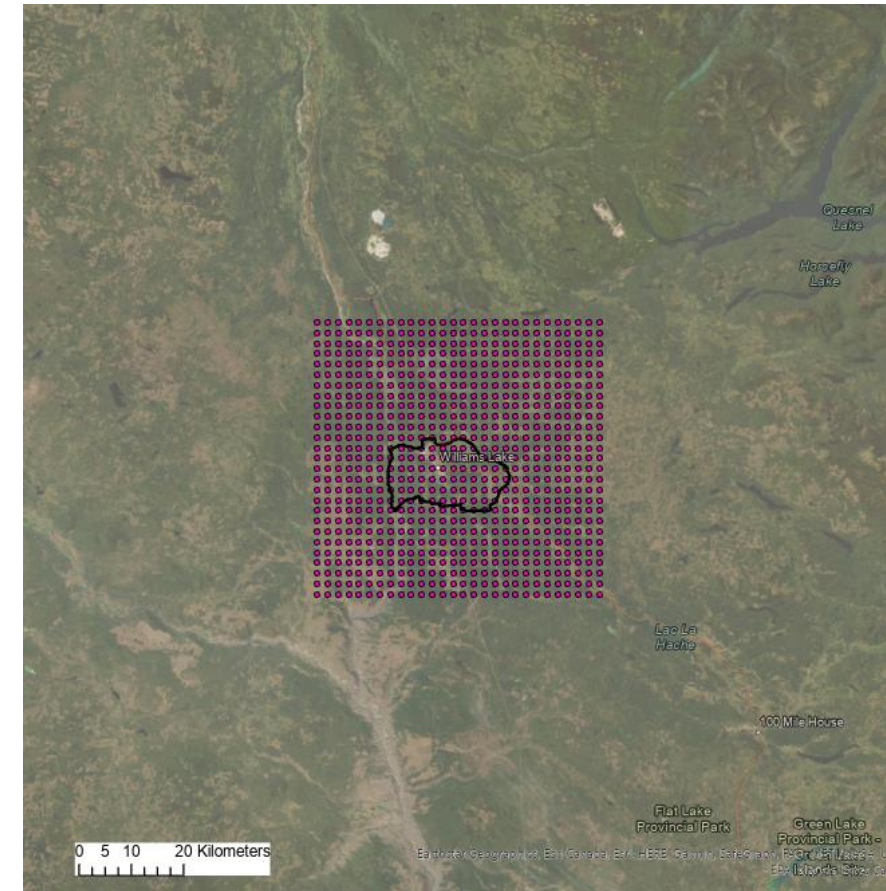


# Gridded Wildfire Modelling

1. Analyze local weather data and patterns
2. Model wildfires from each ignition point in the 5km grid to determine the fire shed
  - 7,540 fires
3. More detailed modelling within fire shed. (2km grid)
  - ~ 30,240 fires



5km ignition grid



Example 2km ignition grid

## Provincial Strategic Threat Analysis

Strategic-level analysis of many different factors that contribute to wildfire threats, but it is not intended to represent absolute, site-specific values.

- Mapped wildfire hazards (radiant heat and embers) at 90<sup>th</sup> percentile weather\*
- Considers historic wildfire ignition density
- Doesn't use wind direction or slope
- Doesn't consider impacts to specific assets

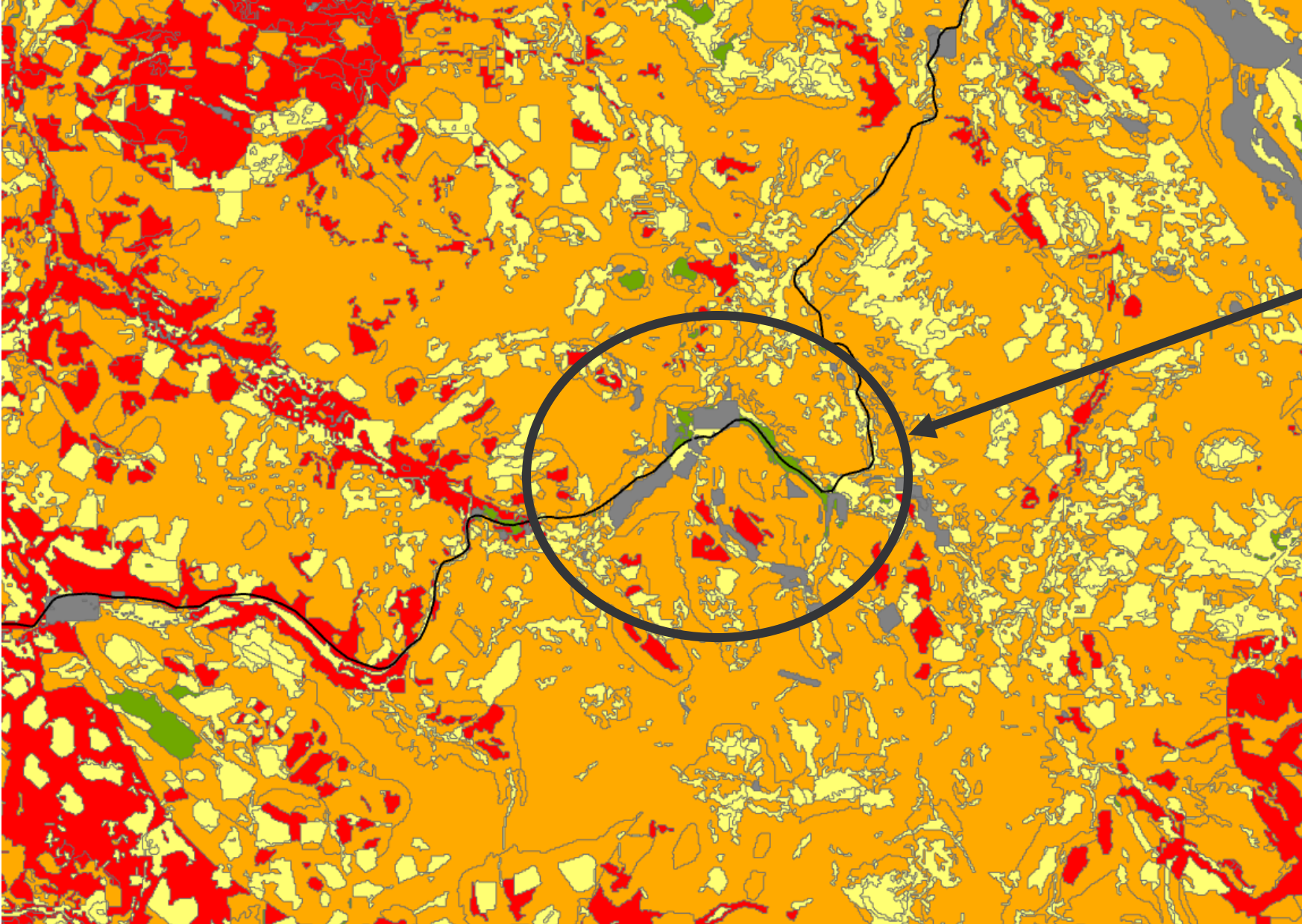
## Gridded wildfire modelling

Landscape-level analysis that considers how fires behave in the area and **impact specific values** (e.g. homes).

- Mapped wildfire hazards (radiant heat and embers) under a range of weather conditions
- Considers as many possible ignition locations as possible
- Incorporates wind direction
- Direct assessment of how fires spread and impact assets (structures and homes)
- Creates **firesheds** to help with planning fuel treatments around assets
- Produces **ignition threat maps** to determine where the most impactful wildfires can start



# Example modelling results: PSTA

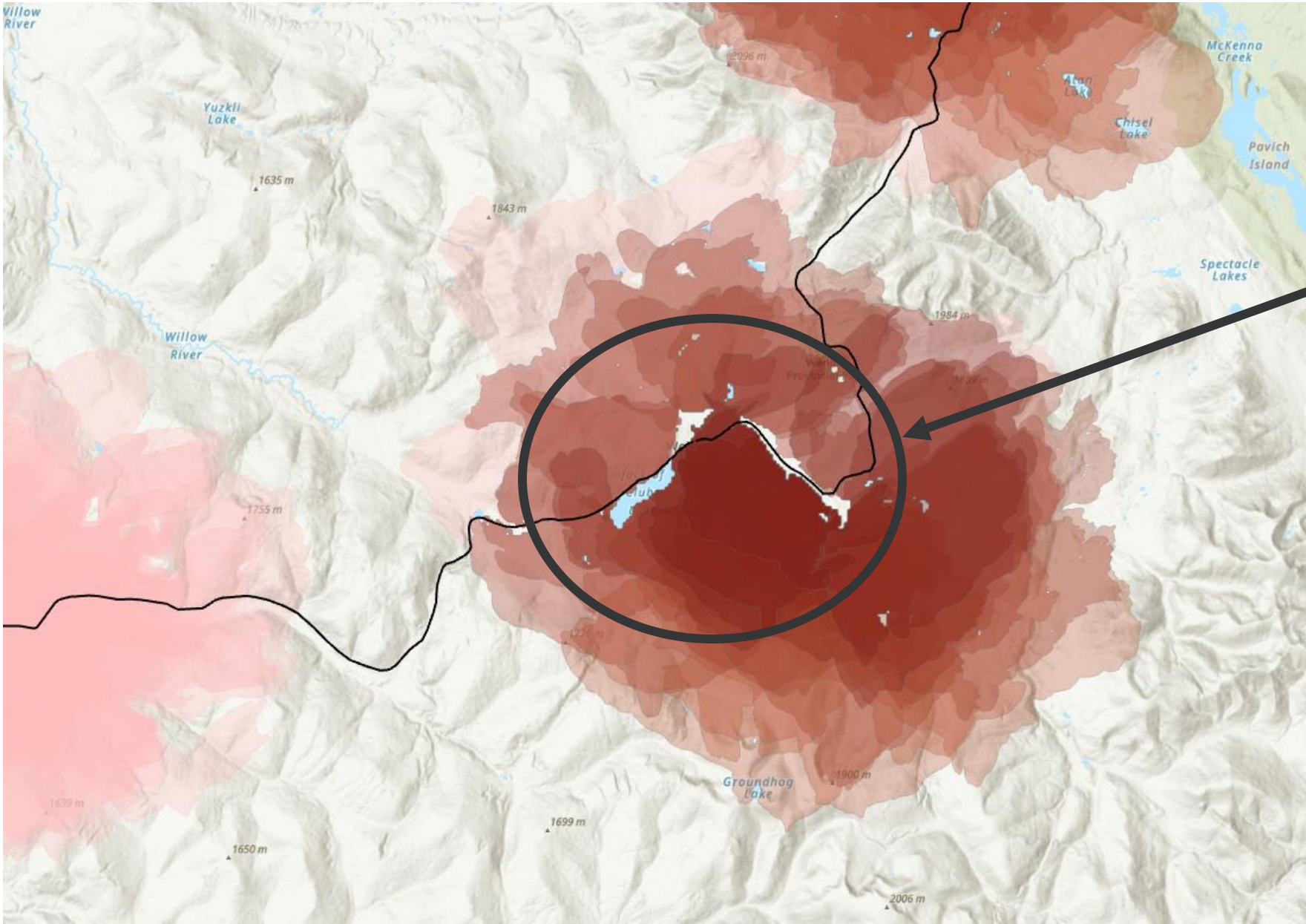


PSTA Threat Class

- Extreme
- High
- Low
- Moderate

AOI

# Example modelling results: Gridded modelling

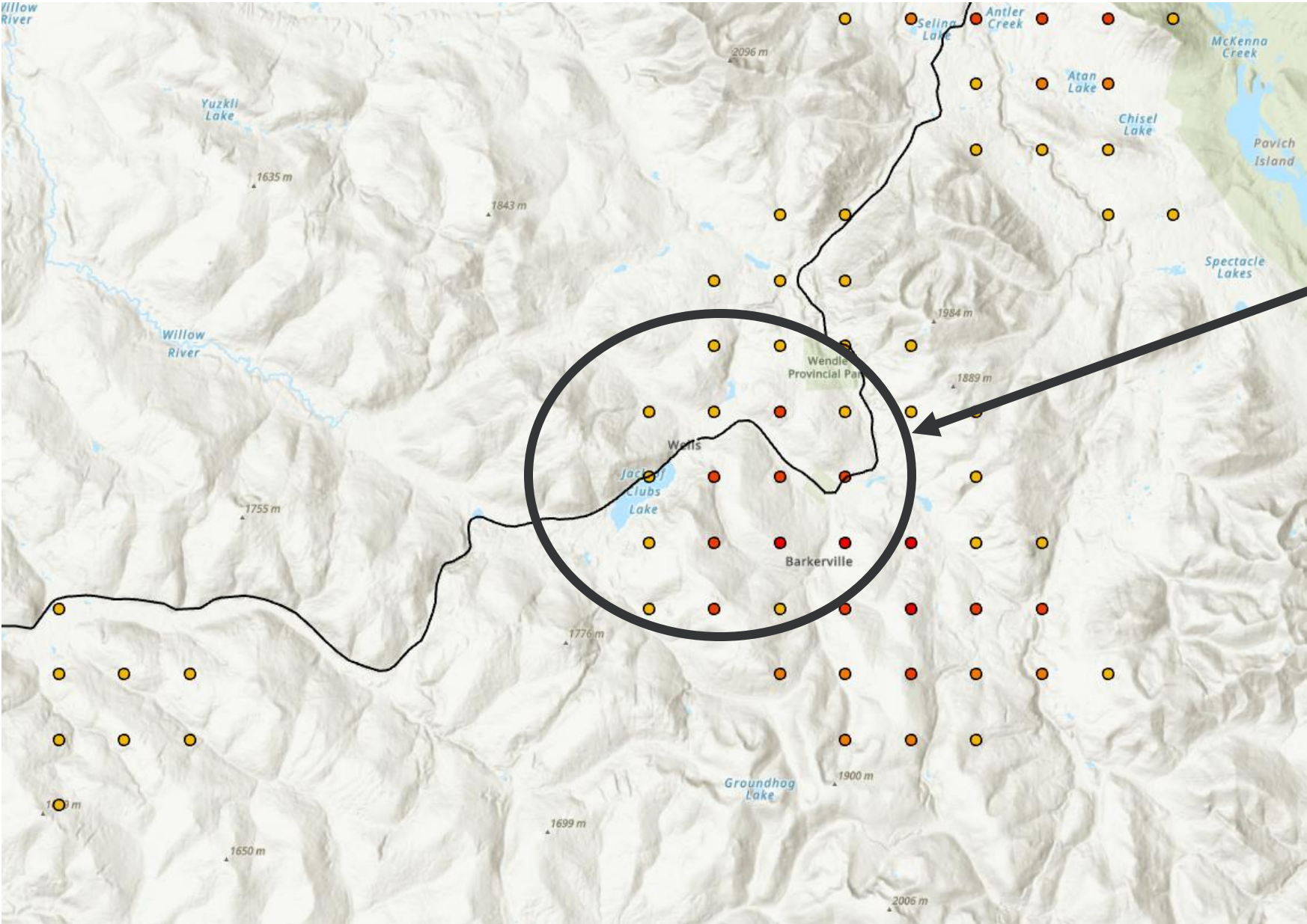


Fireshed

Structures impacted

- 0 - 12
- 13 - 39
- 40 - 78
- 79 - 130
- 131 - 203

# Example modelling results: Gridded modelling



AOI

## Ignition Threat Map

### Structures impacted

- 0 - 5
- 6 - 39
- 40 - 75
- 76 - 130
- 131 - 203



## **Lorena Tillotson**

Wildfire Management Specialist

tel 250-620-0570  
ltillotson@forsite.ca

## **Joanna Wand, MSc**

Wildfire Risk Specialist

tel +61 417 139 356  
jwand@forsite.ca

## **John Walker, RPF**

Stewardship Forester

tel 778-417-0182  
cell 250-305-5324  
John.walker@wlfm.ca